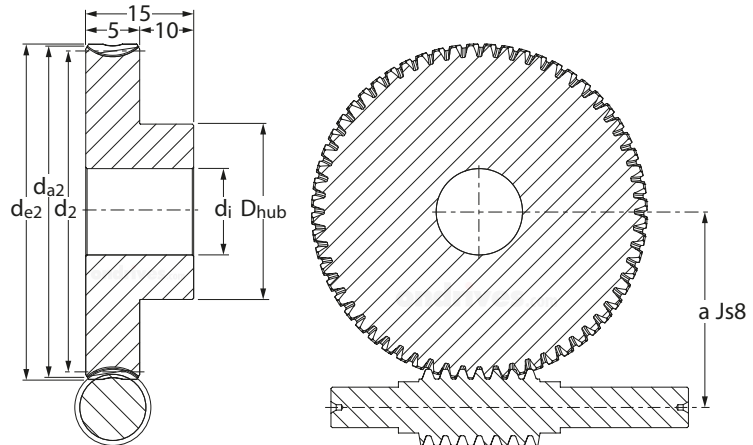


PWG
0.5m_x

PRECISION GEARS

0.5 Module Bronze Wormwheel α 20° PA

Quality Grade Wormwheel 7e DIN 3974/58405



DIN 58405 Tooth Thickness tol.

Part Number				No. of Teeth	Centre Distance	Ref. Dia.	Wheel Throat	Tip Dia.	Bore Dia. H7	Max. Bore Dia. H7	Hub Dia.
1 Start	2 Start	3 Start	4 Start	z_2	a	d_2	d_{a2}	d_{e2}	d_j	d_j	D_{hub}
PWG0.5-18-1	PWG0.5-18-2	PWG0.5-18-3	PWG0.5-18-4	18	9.50	9.0	10.0	10.5	3	3	7.5
PWG0.5-19-1	PWG0.5-19-2	PWG0.5-19-3	PWG0.5-19-4	19	9.75	9.5	10.5	11.0	4	4	8.0
PWG0.5-20-1	PWG0.5-20-2	PWG0.5-20-3	PWG0.5-20-4	20	10.00	10.0	11.0	11.5	4	4	8.0
PWG0.5-21-1	PWG0.5-21-2	PWG0.5-21-3	PWG0.5-21-4	21	10.25	10.5	11.5	12.0	4	4	8.0
PWG0.5-22-1	PWG0.5-22-2	PWG0.5-22-3	PWG0.5-22-4	22	10.50	11.0	12.0	12.5	4	4	8.0
PWG0.5-23-1	PWG0.5-23-2	PWG0.5-23-3	PWG0.5-23-4	23	10.75	11.5	12.5	13.0	4	4	8.0
PWG0.5-24-1	PWG0.5-24-2	PWG0.5-24-3	PWG0.5-24-4	24	11.00	12.0	13.0	13.5	5	5	10.0
PWG0.5-25-1	PWG0.5-25-2	PWG0.5-25-3	PWG0.5-25-4	25	11.25	12.5	13.5	14.0	5	5	10.0
PWG0.5-26-1	PWG0.5-26-2	PWG0.5-26-3	PWG0.5-26-4	26	11.50	13.0	14.0	14.5	5	5	10.0
PWG0.5-27-1	PWG0.5-27-2	PWG0.5-27-3	PWG0.5-27-4	27	11.75	13.5	14.5	15.0	5	5	10.0
PWG0.5-28-1	PWG0.5-28-2	PWG0.5-28-3	PWG0.5-28-4	28	12.00	14.0	15.0	15.5	5	5	10.0
PWG0.5-29-1	PWG0.5-29-2	PWG0.5-29-3	PWG0.5-29-4	29	12.25	14.5	15.5	16.0	6	6	12.5
PWG0.5-30-1	PWG0.5-30-2	PWG0.5-30-3	PWG0.5-30-4	30	12.50	15.0	16.0	16.5	6	6	12.5
PWG0.5-32-1	PWG0.5-32-2	PWG0.5-32-3	PWG0.5-32-4	32	13.00	16.0	17.0	17.5	6	6	12.5
PWG0.5-35-1	PWG0.5-35-2	PWG0.5-35-3	PWG0.5-35-4	35	13.75	17.5	18.5	19.0	6	6	12.5
PWG0.5-38-1	PWG0.5-38-2	PWG0.5-38-3	PWG0.5-38-4	38	14.50	19.0	20.0	20.5	6	8	15.0
PWG0.5-40-1	PWG0.5-40-2	PWG0.5-40-3	PWG0.5-40-4	40	15.00	20.0	21.0	21.5	6	8	15.0
PWG0.5-42-1	PWG0.5-42-2	PWG0.5-42-3	PWG0.5-42-4	42	15.50	21.0	22.0	22.5	6	8	15.0
PWG0.5-45-1	PWG0.5-45-2	PWG0.5-45-3	PWG0.5-45-4	45	16.25	22.5	23.5	24.0	6	8	15.0
PWG0.5-48-1	PWG0.5-48-2	PWG0.5-48-3	PWG0.5-48-4	48	17.00	24.0	25.0	25.5	6	8	15.0
PWG0.5-50-1	PWG0.5-50-2	PWG0.5-50-3	PWG0.5-50-4	50	17.50	25.0	26.0	26.5	6	8	15.0
PWG0.5-52-1	PWG0.5-52-2	PWG0.5-52-3	PWG0.5-52-4	52	18.00	26.0	27.0	27.5	6	8	15.0
PWG0.5-55-1	PWG0.5-55-2	PWG0.5-55-3	PWG0.5-55-4	55	18.75	27.5	28.5	29.0	6	8	15.0
PWG0.5-58-1	PWG0.5-58-2	PWG0.5-58-3	PWG0.5-58-4	58	19.50	29.0	30.0	30.5	8	10	20.0
PWG0.5-60-1	PWG0.5-60-2	PWG0.5-60-3	PWG0.5-60-4	60	20.00	30.0	31.0	31.5	8	10	20.0
PWG0.5-62-1	PWG0.5-62-2	PWG0.5-62-3	PWG0.5-62-4	62	20.50	31.0	32.0	32.5	8	10	20.0
PWG0.5-65-1	PWG0.5-65-2	PWG0.5-65-3	PWG0.5-65-4	65	21.25	32.5	33.5	34.0	8	10	20.0
PWG0.5-68-1	PWG0.5-68-2	PWG0.5-68-3	PWG0.5-68-4	68	22.00	34.0	35.0	35.5	8	10	20.0
PWG0.5-70-1	PWG0.5-70-2	PWG0.5-70-3	PWG0.5-70-4	70	22.50	35.0	36.0	36.5	8	10	20.0
PWG0.5-72-1	PWG0.5-72-2	PWG0.5-72-3	PWG0.5-72-4	72	23.00	36.0	37.0	37.5	8	10	20.0
PWG0.5-75-1	PWG0.5-75-2	PWG0.5-75-3	PWG0.5-75-4	75	23.75	37.5	38.5	39.0	8	10	20.0
PWG0.5-78-1	PWG0.5-78-2	PWG0.5-78-3	PWG0.5-78-4	78	24.50	39.0	40.0	40.5	8	16	30.0
PWG0.5-80-1	PWG0.5-80-2	PWG0.5-80-3	PWG0.5-80-4	80	25.00	40.0	41.0	41.5	8	16	30.0
PWG0.5-82-1	PWG0.5-82-2	PWG0.5-82-3	PWG0.5-82-4	82	25.50	41.0	42.0	42.5	10	16	30.0
PWG0.5-85-1	PWG0.5-85-2	PWG0.5-85-3	PWG0.5-85-4	85	26.25	42.5	43.5	44.0	10	16	30.0
PWG0.5-90-1	PWG0.5-90-2	PWG0.5-90-3	PWG0.5-90-4	90	27.50	45.0	46.0	46.5	10	16	30.0
PWG0.5-95-1	PWG0.5-95-2	PWG0.5-95-3	PWG0.5-95-4	95	28.75	47.5	48.5	49.0	10	16	30.0
PWG0.5-100-1	PWG0.5-100-2	PWG0.5-100-3	PWG0.5-100-4	100	30.00	50.0	51.0	51.5	12	20	35.0
PWG0.5-105-1	PWG0.5-105-2	PWG0.5-105-3	PWG0.5-105-4	105	31.25	52.5	53.5	54.0	12	20	35.0
PWG0.5-110-1	PWG0.5-110-2	PWG0.5-110-3	PWG0.5-110-4	110	32.50	55.0	56.0	56.5	12	20	35.0
PWG0.5-115-1	PWG0.5-115-2	PWG0.5-115-3	PWG0.5-115-4	115	33.75	57.5	58.5	59.0	12	20	35.0
PWG0.5-120-1	PWG0.5-120-2	PWG0.5-120-3	PWG0.5-120-4	120	35.00	60.0	61.0	61.5	12	20	35.0
PWG0.5-130-1	PWG0.5-130-2	PWG0.5-130-3	PWG0.5-130-4	130	37.50	65.0	66.0	66.5	12	25	45.0
PWG0.5-140-1	PWG0.5-140-2	PWG0.5-140-3	PWG0.5-140-4	140	40.00	70.0	71.0	71.5	12	25	45.0
PWG0.5-150-1	PWG0.5-150-2	PWG0.5-150-3	PWG0.5-150-4	150	42.50	75.0	76.0	76.5	12	25	45.0
PWG0.5-160-1	PWG0.5-160-2	PWG0.5-160-3	PWG0.5-160-4	160	45.00	80.0	81.0	81.5	14	30	55.0
PWG0.5-170-1	PWG0.5-170-2	PWG0.5-170-3	PWG0.5-170-4	170	47.50	85.0	86.0	86.5	14	30	55.0
PWG0.5-180-1	PWG0.5-180-2	PWG0.5-180-3	PWG0.5-180-4	180	50.00	90.0	91.0	91.5	14	30	55.0
PWG0.5-190-1	PWG0.5-190-2	PWG0.5-190-3	PWG0.5-190-4	190	52.50	95.0	96.0	96.5	14	30	55.0
PWG0.5-200-1	PWG0.5-200-2	PWG0.5-200-3	PWG0.5-200-4	200	55.00	100.0	101.0	101.5	16	35	60.0
PWG0.5-210-1	PWG0.5-210-2	PWG0.5-210-3	PWG0.5-210-4	210	57.50	105.0	106.0	106.5	16	35	60.0
PWG0.5-220-1	PWG0.5-220-2	PWG0.5-220-3	PWG0.5-220-4	220	60.00	110.0	111.0	111.5	16	35	60.0
PWG0.5-230-1	PWG0.5-230-2	PWG0.5-230-3	PWG0.5-230-4	230	62.50	115.0	116.0	116.5	16	40	65.0
PWG0.5-240-1	PWG0.5-240-2	PWG0.5-240-3	PWG0.5-240-4	240	65.00	120.0	121.0	121.5	16	40	65.0
PWG0.5-250-1	PWG0.5-250-2	PWG0.5-250-3	PWG0.5-250-4	250	67.50	125.0	126.0	126.5	16	40	65.0

PWG
0.5m_x

PRECISION GEARS

0.5 Module Bronze Wormwheel α 20° PA

Quality Grade Wormwheel 7e DIN 3974/58405

Standard Part **PWG** **0.5** **50** **1**

Modified Part **PWG** **0.5** **50** **3** **8** **K** **T**

PWG - Precision Worm Gear
Quality Grade 7e DIN 3974/58405
Other Quality Grades available.
See Technical

m_x Module - Cut with DIN 867 1.25/0.20/1.0
Ref. Tooth Profile Topping WD = 2.25 x m_x

Number of Teeth **z**

Number of Starts on Worm
Ratio = $\frac{(z_2) \text{ No. of teeth on wheel}}{(z_1) \text{ No. of starts on worm}}$

T = 1 x Tapped hole **2T** = 2 x Tapped holes
P = 1 x Pin Hole **PT** = 1 x Pin Hole through
All threads metric as standard.
See Technical

K - Keyway supplied to
DIN 6885 - Js9 tolerance.
See Technical

To specify different bore enter size required
Example: 8 = 8mm H7 etc
See Technical

Material: Bronze CA104. RH lead angle.

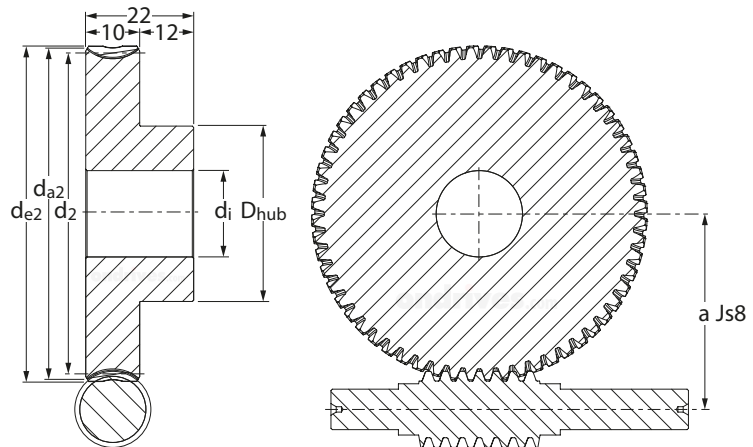
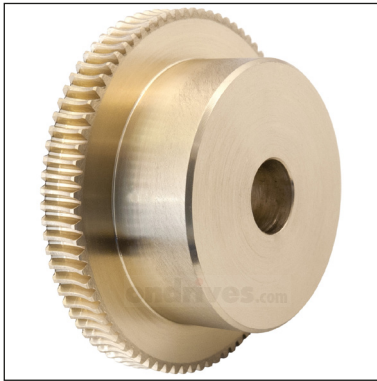
Part Number 1 Start	Backlash (mm) j _{t,e} (max) j _{t,i} (min)	Torque T ₂ Nm n ₂ 100 Rpm	Part Number 2 Start	Backlash (mm) j _{t,e} (max) j _{t,i} (min)	Torque T ₂ Nm n ₂ 100 Rpm	Part Number 3 Start	Backlash (mm) j _{t,e} (max) j _{t,i} (min)	Torque T ₂ Nm n ₂ 100 Rpm	Part Number 4 Start	Backlash (mm) j _{t,e} (max) j _{t,i} (min)	Torque T ₂ Nm n ₂ 100 Rpm
PWG0.5-18-1	0.067 - 0.027	0.47	PWG0.5-18-2	0.067 - 0.027	0.44	PWG0.5-18-3	0.067 - 0.027	0.45	PWG0.5-18-4	0.068 - 0.028	0.46
PWG0.5-19-1	0.067 - 0.027	0.52	PWG0.5-19-2	0.067 - 0.027	0.49	PWG0.5-19-3	0.067 - 0.027	0.49	PWG0.5-19-4	0.068 - 0.028	0.51
PWG0.5-20-1	0.068 - 0.025	0.53	PWG0.5-20-2	0.069 - 0.025	0.54	PWG0.5-20-3	0.069 - 0.026	0.55	PWG0.5-20-4	0.070 - 0.026	0.56
PWG0.5-21-1	0.068 - 0.025	0.58	PWG0.5-21-2	0.069 - 0.025	0.60	PWG0.5-21-3	0.069 - 0.026	0.60	PWG0.5-21-4	0.070 - 0.026	0.62
PWG0.5-22-1	0.068 - 0.025	0.64	PWG0.5-22-2	0.069 - 0.025	0.66	PWG0.5-22-3	0.069 - 0.026	0.66	PWG0.5-22-4	0.070 - 0.026	0.68
PWG0.5-23-1	0.068 - 0.025	0.70	PWG0.5-23-2	0.069 - 0.025	0.71	PWG0.5-23-3	0.069 - 0.026	0.72	PWG0.5-23-4	0.070 - 0.026	0.74
PWG0.5-24-1	0.068 - 0.025	0.76	PWG0.5-24-2	0.069 - 0.025	0.78	PWG0.5-24-3	0.069 - 0.026	0.78	PWG0.5-24-4	0.070 - 0.026	0.80
PWG0.5-25-1	0.074 - 0.029	0.82	PWG0.5-25-2	0.074 - 0.029	0.84	PWG0.5-25-3	0.074 - 0.029	0.84	PWG0.5-25-4	0.075 - 0.029	0.87
PWG0.5-26-1	0.074 - 0.029	0.89	PWG0.5-26-2	0.074 - 0.029	0.90	PWG0.5-26-3	0.074 - 0.029	0.91	PWG0.5-26-4	0.075 - 0.029	0.94
PWG0.5-27-1	0.074 - 0.029	0.96	PWG0.5-27-2	0.074 - 0.029	0.97	PWG0.5-27-3	0.074 - 0.029	0.98	PWG0.5-27-4	0.075 - 0.029	1.01
PWG0.5-28-1	0.074 - 0.029	1.03	PWG0.5-28-2	0.074 - 0.029	1.04	PWG0.5-28-3	0.074 - 0.029	1.05	PWG0.5-28-4	0.075 - 0.029	1.08
PWG0.5-29-1	0.074 - 0.029	1.10	PWG0.5-29-2	0.074 - 0.029	1.12	PWG0.5-29-3	0.074 - 0.029	1.12	PWG0.5-29-4	0.075 - 0.029	1.16
PWG0.5-30-1	0.074 - 0.029	1.18	PWG0.5-30-2	0.074 - 0.029	1.19	PWG0.5-30-3	0.074 - 0.029	1.20	PWG0.5-30-4	0.075 - 0.029	1.24
PWG0.5-32-1	0.074 - 0.029	1.33	PWG0.5-32-2	0.074 - 0.029	1.35	PWG0.5-32-3	0.074 - 0.029	1.36	PWG0.5-32-4	0.075 - 0.029	1.40
PWG0.5-35-1	0.074 - 0.029	1.58	PWG0.5-35-2	0.074 - 0.029	1.61	PWG0.5-35-3	0.074 - 0.029	1.62	PWG0.5-35-4	0.075 - 0.029	1.67
PWG0.5-38-1	0.074 - 0.029	1.85	PWG0.5-38-2	0.074 - 0.029	1.88	PWG0.5-38-3	0.074 - 0.029	1.90	PWG0.5-38-4	0.075 - 0.029	1.96
PWG0.5-40-1	0.074 - 0.029	2.04	PWG0.5-40-2	0.074 - 0.029	1.92	PWG0.5-40-3	0.074 - 0.029	2.09	PWG0.5-40-4	0.075 - 0.029	2.16
PWG0.5-42-1	0.074 - 0.029	2.24	PWG0.5-42-2	0.074 - 0.029	2.12	PWG0.5-42-3	0.074 - 0.029	2.30	PWG0.5-42-4	0.075 - 0.029	2.38
PWG0.5-45-1	0.074 - 0.029	2.55	PWG0.5-45-2	0.074 - 0.029	2.43	PWG0.5-45-3	0.074 - 0.029	2.63	PWG0.5-45-4	0.075 - 0.029	2.72
PWG0.5-48-1	0.074 - 0.029	2.87	PWG0.5-48-2	0.074 - 0.029	2.76	PWG0.5-48-3	0.074 - 0.029	2.98	PWG0.5-48-4	0.075 - 0.029	3.08
PWG0.5-50-1	0.074 - 0.029	3.09	PWG0.5-50-2	0.074 - 0.029	2.99	PWG0.5-50-3	0.074 - 0.029	3.22	PWG0.5-50-4	0.075 - 0.029	3.33
PWG0.5-52-1	0.060 - 0.031	3.32	PWG0.5-52-2	0.060 - 0.031	3.23	PWG0.5-52-3	0.060 - 0.031	3.47	PWG0.5-52-4	0.061 - 0.031	3.59
PWG0.5-55-1	0.062 - 0.028	3.67	PWG0.5-55-2	0.062 - 0.029	3.61	PWG0.5-55-3	0.063 - 0.029	3.87	PWG0.5-55-4	0.063 - 0.029	4.00
PWG0.5-58-1	0.062 - 0.028	4.04	PWG0.5-58-2	0.062 - 0.029	4.00	PWG0.5-58-3	0.063 - 0.029	4.29	PWG0.5-58-4	0.063 - 0.029	4.43
PWG0.5-60-1	0.062 - 0.028	4.29	PWG0.5-60-2	0.062 - 0.029	4.27	PWG0.5-60-3	0.063 - 0.029	4.23	PWG0.5-60-4	0.063 - 0.029	4.73
PWG0.5-62-1	0.062 - 0.028	4.55	PWG0.5-62-2	0.062 - 0.029	4.55	PWG0.5-62-3	0.063 - 0.029	4.52	PWG0.5-62-4	0.063 - 0.029	5.02
PWG0.5-65-1	0.062 - 0.028	4.96	PWG0.5-65-2	0.062 - 0.029	4.99	PWG0.5-65-3	0.063 - 0.029	4.97	PWG0.5-65-4	0.063 - 0.029	5.26
PWG0.5-68-1	0.062 - 0.028	5.38	PWG0.5-68-2	0.062 - 0.029	5.44	PWG0.5-68-3	0.063 - 0.029	5.43	PWG0.5-68-4	0.063 - 0.029	5.50
PWG0.5-70-1	0.062 - 0.028	5.66	PWG0.5-70-2	0.062 - 0.029	5.70	PWG0.5-70-3	0.063 - 0.029	5.69	PWG0.5-70-4	0.063 - 0.029	5.67
PWG0.5-72-1	0.062 - 0.028	5.96	PWG0.5-72-2	0.062 - 0.029	5.86	PWG0.5-72-3	0.063 - 0.029	5.85	PWG0.5-72-4	0.063 - 0.029	5.83
PWG0.5-75-1	0.062 - 0.028	6.35	PWG0.5-75-2	0.062 - 0.029	6.11	PWG0.5-75-3	0.063 - 0.029	6.09	PWG0.5-75-4	0.063 - 0.029	6.07
PWG0.5-78-1	0.062 - 0.028	6.62	PWG0.5-78-2	0.062 - 0.029	6.35	PWG0.5-78-3	0.063 - 0.029	6.34	PWG0.5-78-4	0.063 - 0.029	6.31
PWG0.5-80-1	0.062 - 0.028	6.81	PWG0.5-80-2	0.062 - 0.029	6.52	PWG0.5-80-3	0.063 - 0.029	6.50	PWG0.5-80-4	0.063 - 0.029	6.47
PWG0.5-82-1	0.062 - 0.028	7.00	PWG0.5-82-2	0.062 - 0.029	6.68	PWG0.5-82-3	0.063 - 0.029	6.66	PWG0.5-82-4	0.063 - 0.029	6.64
PWG0.5-85-1	0.062 - 0.028	7.27	PWG0.5-85-2	0.062 - 0.029	6.92	PWG0.5-85-3	0.063 - 0.029	6.90	PWG0.5-85-4	0.063 - 0.029	6.88
PWG0.5-90-1	0.062 - 0.028	7.74	PWG0.5-90-2	0.062 - 0.029	7.33	PWG0.5-90-3	0.063 - 0.029	7.31	PWG0.5-90-4	0.063 - 0.029	7.28
PWG0.5-95-1	0.062 - 0.028	8.21	PWG0.5-95-2	0.062 - 0.029	7.74	PWG0.5-95-3	0.063 - 0.029	7.72	PWG0.5-95-4	0.063 - 0.029	7.69
PWG0.5-100-1	0.062 - 0.028	8.68	PWG0.5-100-2	0.062 - 0.029	8.15	PWG0.5-100-3	0.063 - 0.029	8.12	PWG0.5-100-4	0.063 - 0.029	8.09
PWG0.5-105-1	0.088 - 0.029	9.16	PWG0.5-105-2	0.088 - 0.030	8.59	PWG0.5-105-3	0.089 - 0.030	8.53	PWG0.5-105-4	0.089 - 0.030	8.50
PWG0.5-110-1	0.088 - 0.029	9.64	PWG0.5-110-2	0.088 - 0.030	9.04	PWG0.5-110-3	0.089 - 0.030	8.94	PWG0.5-110-4	0.089 - 0.030	8.90
PWG0.5-115-1	0.088 - 0.029	10.11	PWG0.5-115-2	0.088 - 0.030	9.49	PWG0.5-115-3	0.089 - 0.030	9.34	PWG0.5-115-4	0.089 - 0.030	9.31
PWG0.5-120-1	0.088 - 0.029	10.59	PWG0.5-120-2	0.088 - 0.030	9.94	PWG0.5-120-3	0.089 - 0.030	9.75	PWG0.5-120-4	0.089 - 0.030	9.71
PWG0.5-130-1	0.088 - 0.029	11.56	PWG0.5-130-2	0.088 - 0.030	10.84	PWG0.5-130-3	0.089 - 0.030	10.56	PWG0.5-130-4	0.089 - 0.030	10.52
PWG0.5-140-1	0.088 - 0.029	12.53	PWG0.5-140-2	0.088 - 0.030	11.75	PWG0.5-140-3	0.089 - 0.030	11.37	PWG0.5-140-4	0.089 - 0.030	11.33
PWG0.5-150-1	0.088 - 0.029	13.51	PWG0.5-150-2	0.088 - 0.030	12.67	PWG0.5-150-3	0.089 - 0.030	12.19	PWG0.5-150-4	0.089 - 0.030	12.14
PWG0.5-160-1	0.088 - 0.029	14.50	PWG0.5-160-2	0.088 - 0.030	13.60	PWG0.5-160-3	0.089 - 0.030	13.07	PWG0.5-160-4	0.089 - 0.030	12.95
PWG0.5-170-1	0.088 - 0.029	15.49	PWG0.5-170-2	0.088 - 0.030	14.52	PWG0.5-170-3	0.089 - 0.030	13.97	PWG0.5-170-4	0.089 - 0.030	13.76
PWG0.5-180-1	0.088 - 0.029	16.48	PWG0.5-180-2	0.088 - 0.030	15.46	PWG0.5-180-3	0.089 - 0.030	14.86	PWG0.5-180-4	0.089 - 0.030	14.57
PWG0.5-190-1	0.090 - 0.027	17.48	PWG0.5-190-2	0.091 - 0.027	16.40	PWG0.5-190-3	0.091 - 0.027	15.77	PWG0.5-190-4	0.092 - 0.027	15.38
PWG0.5-200-1	0.090 - 0.027	18.49	PWG0.5-200-2	0.091 - 0.027	17.34	PWG0.5-200-3	0.091 - 0.027	16.67	PWG0.5-200-4	0.092 - 0.027	16.19
PWG0.5-210-1	0.101 - 0.035	19.50	PWG0.5-210-2	0.101 - 0.036	18.29	PWG0.5-210-3	0.102 - 0.036	17.58	PWG0.5-210-4	0.103 - 0.036	17.07
PWG0.5-220-1	0.101 - 0.035	20.51	PWG0.5-220-2	0.101 - 0.036	19.24	PWG0.5-220-3	0.102 - 0.036	18.50	PWG0.5-220-4	0.103 - 0.036	17.96
PWG0.5-230-1	0.101 - 0.035	21.53	PWG0.5-230-2	0.101 - 0.036	20.19	PWG0.5-230-3	0.102 - 0.036	19.42	PWG0.5-230-4	0.103 - 0.036	18.85
PWG0.5-240-1	0.101 - 0.035	22.55	PWG0.5-240-2	0.101 - 0.036	21.15	PWG0.5-240-3	0.102 - 0.036	20.34	PWG0.5-240-4	0.103 - 0.036	19.75
PWG0.5-250-1	0.101 - 0.035	23.58	PWG0.5-250-2	0.101 - 0.036	22.11	PWG0.5-250-3	0.102 - 0.036	21.26	PWG0.5-250-4	0.103 - 0.036	20.64

**PWG
1.0m_x**

PRECISION GEARS

1.0 Module Bronze Wormwheel α 20° PA

Quality Grade Wormwheel 7e25 DIN 3974/3967



DIN 3967 Tooth Thickness tol.

Part Number				No. of Teeth	Centre Distance	Ref. Dia.	Wheel Throat	Tip Dia.	Bore Dia. H7	Max. Bore Dia. H7	Hub Dia.
1 Start	2 Start	3 Start	4 Start	z_2	a	d_2	d_{a2}	d_{e2}	d_i	d_j	D_{hub}
PWG1.0-15-1	PWG1.0-15-2	PWG1.0-15-3	PWG1.0-15-4	15	15.0	15	17	18	5	5	12
PWG1.0-16-1	PWG1.0-16-2	PWG1.0-16-3	PWG1.0-16-4	16	15.5	16	18	19	5	5	12
PWG1.0-17-1	PWG1.0-17-2	PWG1.0-17-3	PWG1.0-17-4	17	16.0	17	19	20	5	5	12
PWG1.0-18-1	PWG1.0-18-2	PWG1.0-18-3	PWG1.0-18-4	18	16.5	18	20	21	5	5	12
PWG1.0-19-1	PWG1.0-19-2	PWG1.0-19-3	PWG1.0-19-4	19	17.0	19	21	22	5	5	12
PWG1.0-20-1	PWG1.0-20-2	PWG1.0-20-3	PWG1.0-20-4	20	17.5	20	22	23	5	5	12
PWG1.0-21-1	PWG1.0-21-2	PWG1.0-21-3	PWG1.0-21-4	21	18.0	21	23	24	5	5	12
PWG1.0-22-1	PWG1.0-22-2	PWG1.0-22-3	PWG1.0-22-4	22	18.5	22	24	25	5	5	12
PWG1.0-23-1	PWG1.0-23-2	PWG1.0-23-3	PWG1.0-23-4	23	19.0	23	25	26	5	5	12
PWG1.0-24-1	PWG1.0-24-2	PWG1.0-24-3	PWG1.0-24-4	24	19.5	24	26	27	6	10	20
PWG1.0-25-1	PWG1.0-25-2	PWG1.0-25-3	PWG1.0-25-4	25	20.0	25	27	28	6	10	20
PWG1.0-26-1	PWG1.0-26-2	PWG1.0-26-3	PWG1.0-26-4	26	20.5	26	28	29	6	10	20
PWG1.0-27-1	PWG1.0-27-2	PWG1.0-27-3	PWG1.0-27-4	27	21.0	27	29	30	6	10	20
PWG1.0-28-1	PWG1.0-28-2	PWG1.0-28-3	PWG1.0-28-4	28	21.5	28	30	31	6	10	20
PWG1.0-29-1	PWG1.0-29-2	PWG1.0-29-3	PWG1.0-29-4	29	22.0	29	31	32	8	14	25
PWG1.0-30-1	PWG1.0-30-2	PWG1.0-30-3	PWG1.0-30-4	30	22.5	30	32	33	8	14	25
PWG1.0-32-1	PWG1.0-32-2	PWG1.0-32-3	PWG1.0-32-4	32	23.5	32	34	35	8	14	25
PWG1.0-35-1	PWG1.0-35-2	PWG1.0-35-3	PWG1.0-35-4	35	25.0	35	37	38	8	14	25
PWG1.0-38-1	PWG1.0-38-2	PWG1.0-38-3	PWG1.0-38-4	38	26.5	38	40	41	10	20	35
PWG1.0-40-1	PWG1.0-40-2	PWG1.0-40-3	PWG1.0-40-4	40	27.5	40	42	43	10	20	35
PWG1.0-42-1	PWG1.0-42-2	PWG1.0-42-3	PWG1.0-42-4	42	28.5	42	44	45	10	20	35
PWG1.0-45-1	PWG1.0-45-2	PWG1.0-45-3	PWG1.0-45-4	45	30.0	45	47	48	10	20	35
PWG1.0-48-1	PWG1.0-48-2	PWG1.0-48-3	PWG1.0-48-4	48	31.5	48	50	51	10	20	35
PWG1.0-50-1	PWG1.0-50-2	PWG1.0-50-3	PWG1.0-50-4	50	32.5	50	52	53	10	20	35
PWG1.0-52-1	PWG1.0-52-2	PWG1.0-52-3	PWG1.0-52-4	52	33.5	52	54	55	10	20	35
PWG1.0-55-1	PWG1.0-55-2	PWG1.0-55-3	PWG1.0-55-4	55	35.0	55	57	58	10	20	35
PWG1.0-58-1	PWG1.0-58-2	PWG1.0-58-3	PWG1.0-58-4	58	36.5	58	60	61	10	25	40
PWG1.0-60-1	PWG1.0-60-2	PWG1.0-60-3	PWG1.0-60-4	60	37.5	60	62	63	10	25	40
PWG1.0-62-1	PWG1.0-62-2	PWG1.0-62-3	PWG1.0-62-4	62	38.5	62	64	65	10	25	40
PWG1.0-65-1	PWG1.0-65-2	PWG1.0-65-3	PWG1.0-65-4	65	40.0	65	67	68	10	25	40
PWG1.0-68-1	PWG1.0-68-2	PWG1.0-68-3	PWG1.0-68-4	68	41.5	68	70	71	10	25	40
PWG1.0-70-1	PWG1.0-70-2	PWG1.0-70-3	PWG1.0-70-4	70	42.5	70	72	73	10	25	40
PWG1.0-72-1	PWG1.0-72-2	PWG1.0-72-3	PWG1.0-72-4	72	43.5	72	74	75	10	25	40
PWG1.0-75-1	PWG1.0-75-2	PWG1.0-75-3	PWG1.0-75-4	75	45.0	75	77	78	10	25	40
PWG1.0-78-1	PWG1.0-78-2	PWG1.0-78-3	PWG1.0-78-4	78	46.5	78	80	81	10	30	50
PWG1.0-80-1	PWG1.0-80-2	PWG1.0-80-3	PWG1.0-80-4	80	47.5	80	82	83	10	30	50
PWG1.0-82-1	PWG1.0-82-2	PWG1.0-82-3	PWG1.0-82-4	82	48.5	82	84	85	12	30	50
PWG1.0-85-1	PWG1.0-85-2	PWG1.0-85-3	PWG1.0-85-4	85	50.0	85	87	88	12	30	50
PWG1.0-90-1	PWG1.0-90-2	PWG1.0-90-3	PWG1.0-90-4	90	52.5	90	92	93	12	30	50
PWG1.0-95-1	PWG1.0-95-2	PWG1.0-95-3	PWG1.0-95-4	95	55.0	95	97	98	12	30	50
PWG1.0-100-1	PWG1.0-100-2	PWG1.0-100-3	PWG1.0-100-4	100	57.5	100	102	103	14	40	65
PWG1.0-105-1	PWG1.0-105-2	PWG1.0-105-3	PWG1.0-105-4	105	60.0	105	107	108	14	40	65
PWG1.0-110-1	PWG1.0-110-2	PWG1.0-110-3	PWG1.0-110-4	110	62.5	110	112	113	14	40	65
PWG1.0-115-1	PWG1.0-115-2	PWG1.0-115-3	PWG1.0-115-4	115	65.0	115	117	118	14	40	65
PWG1.0-120-1	PWG1.0-120-2	PWG1.0-120-3	PWG1.0-120-4	120	67.5	120	122	123	14	40	65
PWG1.0-125-1	PWG1.0-125-2	PWG1.0-125-3	PWG1.0-125-4	125	70.0	125	127	128	14	40	65

**PWG
1.0m_x**

PRECISION GEARS

1.0 Module Bronze Wormwheel α 20° PA

Quality Grade Wormwheel 7e25 DIN 3974/3967

Standard Part **PWG 1.0 50 1**

Modified Part **PWG 1.0 50 3 12 K T**

PWG - Precision Worm Gear
Quality Grade 7e25 DIN 3974/3967
Other Quality Grades available.
See Technical

m_x Module - Cut with DIN 867 1.25/0.20/1.0
Ref. Tooth Profile Topping WD = 2.25 x m_x

Number of Teeth **z**

Number of Starts on Worm
Ratio = $\frac{(Z_2) \text{ No. of teeth on wheel}}{(Z_1) \text{ No. of starts on worm}}$

T = 1 x Tapped hole **2T** = 2 x Tapped holes
P = 1 x Pin Hole **PT** = 1 x Pin Hole through
All threads metric as standard.
See Technical

K - Keyway supplied to
DIN 6885 - Js9 tolerance.
See Technical

To specify different bore enter size required
Example: 12 = 12mm H7 etc
See Technical

Material: Bronze CA104. RH lead angle.

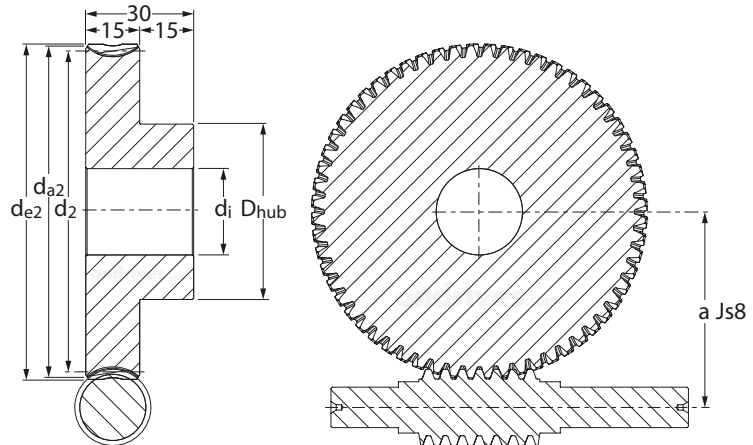
Part Number 1 Start	Backlash (mm) j _{t,e} (max) j _{t,i} (min)	Torque T ₂ Nm n ₂ 100 Rpm	Part Number 2 Start	Backlash (mm) j _{t,e} (max) j _{t,i} (min)	Torque T ₂ Nm n ₂ 100 Rpm	Part Number 3 Start	Backlash (mm) j _{t,e} (max) j _{t,i} (min)	Torque T ₂ Nm n ₂ 100 Rpm	Part Number 4 Start	Backlash (mm) j _{t,e} (max) j _{t,i} (min)	Torque T ₂ Nm n ₂ 100 Rpm
PWG1.0-15-1	0.112 - 0.042	2.05	PWG1.0-15-2	0.113 - 0.043	2.12	PWG1.0-15-3	0.114 - 0.043	2.25	PWG1.0-15-4	0.116 - 0.044	2.45
PWG1.0-16-1	0.112 - 0.042	2.31	PWG1.0-16-2	0.113 - 0.043	2.38	PWG1.0-16-3	0.114 - 0.043	2.52	PWG1.0-16-4	0.116 - 0.044	2.75
PWG1.0-17-1	0.112 - 0.042	2.57	PWG1.0-17-2	0.113 - 0.043	2.65	PWG1.0-17-3	0.114 - 0.043	2.81	PWG1.0-17-4	0.116 - 0.044	3.06
PWG1.0-18-1	0.112 - 0.042	2.85	PWG1.0-18-2	0.113 - 0.043	2.94	PWG1.0-18-3	0.114 - 0.043	3.12	PWG1.0-18-4	0.116 - 0.044	3.40
PWG1.0-19-1	0.112 - 0.042	3.14	PWG1.0-19-2	0.113 - 0.043	3.24	PWG1.0-19-3	0.114 - 0.043	3.44	PWG1.0-19-4	0.116 - 0.044	3.74
PWG1.0-20-1	0.112 - 0.042	3.45	PWG1.0-20-2	0.113 - 0.043	3.56	PWG1.0-20-3	0.114 - 0.043	3.77	PWG1.0-20-4	0.116 - 0.044	4.11
PWG1.0-21-1	0.112 - 0.042	3.76	PWG1.0-21-2	0.113 - 0.043	3.88	PWG1.0-21-3	0.114 - 0.043	4.12	PWG1.0-21-4	0.116 - 0.044	4.48
PWG1.0-22-1	0.114 - 0.040	4.09	PWG1.0-22-2	0.115 - 0.041	4.22	PWG1.0-22-3	0.116 - 0.041	4.48	PWG1.0-22-4	0.118 - 0.042	4.87
PWG1.0-23-1	0.114 - 0.040	4.43	PWG1.0-23-2	0.115 - 0.041	4.57	PWG1.0-23-3	0.116 - 0.041	4.85	PWG1.0-23-4	0.118 - 0.042	5.28
PWG1.0-24-1	0.114 - 0.040	4.79	PWG1.0-24-2	0.115 - 0.041	4.94	PWG1.0-24-3	0.116 - 0.041	5.24	PWG1.0-24-4	0.118 - 0.042	5.70
PWG1.0-25-1	0.114 - 0.040	5.15	PWG1.0-25-2	0.115 - 0.041	5.31	PWG1.0-25-3	0.116 - 0.041	5.64	PWG1.0-25-4	0.118 - 0.042	6.14
PWG1.0-26-1	0.114 - 0.040	5.53	PWG1.0-26-2	0.115 - 0.041	5.70	PWG1.0-26-3	0.116 - 0.041	6.05	PWG1.0-26-4	0.118 - 0.042	6.58
PWG1.0-27-1	0.114 - 0.040	5.92	PWG1.0-27-2	0.115 - 0.041	6.10	PWG1.0-27-3	0.116 - 0.041	6.47	PWG1.0-27-4	0.118 - 0.042	7.05
PWG1.0-28-1	0.114 - 0.040	6.32	PWG1.0-28-2	0.115 - 0.041	6.52	PWG1.0-28-3	0.116 - 0.041	6.91	PWG1.0-28-4	0.118 - 0.042	7.52
PWG1.0-29-1	0.114 - 0.040	6.73	PWG1.0-29-2	0.115 - 0.041	6.94	PWG1.0-29-3	0.116 - 0.041	7.36	PWG1.0-29-4	0.118 - 0.042	8.01
PWG1.0-30-1	0.114 - 0.040	7.15	PWG1.0-30-2	0.115 - 0.041	7.38	PWG1.0-30-3	0.116 - 0.041	7.82	PWG1.0-30-4	0.118 - 0.042	8.52
PWG1.0-32-1	0.114 - 0.040	8.03	PWG1.0-32-2	0.115 - 0.041	8.29	PWG1.0-32-3	0.116 - 0.041	8.79	PWG1.0-32-4	0.118 - 0.042	9.57
PWG1.0-35-1	0.114 - 0.040	9.44	PWG1.0-35-2	0.115 - 0.041	9.74	PWG1.0-35-3	0.116 - 0.041	10.33	PWG1.0-35-4	0.118 - 0.042	11.24
PWG1.0-38-1	0.114 - 0.040	10.94	PWG1.0-38-2	0.115 - 0.041	11.29	PWG1.0-38-3	0.116 - 0.041	11.97	PWG1.0-38-4	0.118 - 0.042	13.04
PWG1.0-40-1	0.114 - 0.040	12.00	PWG1.0-40-2	0.115 - 0.041	12.39	PWG1.0-40-3	0.116 - 0.041	13.13	PWG1.0-40-4	0.118 - 0.042	14.30
PWG1.0-42-1	0.114 - 0.040	13.10	PWG1.0-42-2	0.115 - 0.041	13.52	PWG1.0-42-3	0.116 - 0.041	14.34	PWG1.0-42-4	0.118 - 0.042	15.61
PWG1.0-45-1	0.114 - 0.040	14.84	PWG1.0-45-2	0.115 - 0.041	15.31	PWG1.0-45-3	0.116 - 0.041	16.23	PWG1.0-45-4	0.118 - 0.042	17.67
PWG1.0-48-1	0.116 - 0.038	16.67	PWG1.0-48-2	0.117 - 0.038	17.20	PWG1.0-48-3	0.118 - 0.039	18.23	PWG1.0-48-4	0.120 - 0.039	19.85
PWG1.0-50-1	0.116 - 0.038	17.94	PWG1.0-50-2	0.117 - 0.038	18.51	PWG1.0-50-3	0.118 - 0.039	19.62	PWG1.0-50-4	0.120 - 0.039	21.37
PWG1.0-52-1	0.136 - 0.048	19.25	PWG1.0-52-2	0.137 - 0.048	19.86	PWG1.0-52-3	0.139 - 0.049	21.06	PWG1.0-52-4	0.141 - 0.049	22.93
PWG1.0-55-1	0.136 - 0.048	21.29	PWG1.0-55-2	0.137 - 0.048	21.97	PWG1.0-55-3	0.139 - 0.049	23.30	PWG1.0-55-4	0.141 - 0.049	25.36
PWG1.0-58-1	0.136 - 0.048	23.43	PWG1.0-58-2	0.137 - 0.048	24.18	PWG1.0-58-3	0.139 - 0.049	25.63	PWG1.0-58-4	0.141 - 0.049	27.91
PWG1.0-60-1	0.136 - 0.048	24.90	PWG1.0-60-2	0.137 - 0.048	25.70	PWG1.0-60-3	0.139 - 0.049	27.25	PWG1.0-60-4	0.141 - 0.049	29.66
PWG1.0-62-1	0.136 - 0.048	26.42	PWG1.0-62-2	0.137 - 0.048	27.26	PWG1.0-62-3	0.139 - 0.049	28.90	PWG1.0-62-4	0.141 - 0.049	31.47
PWG1.0-65-1	0.136 - 0.048	28.76	PWG1.0-65-2	0.137 - 0.048	29.68	PWG1.0-65-3	0.139 - 0.049	31.47	PWG1.0-65-4	0.141 - 0.049	34.26
PWG1.0-68-1	0.136 - 0.048	31.20	PWG1.0-68-2	0.137 - 0.048	32.19	PWG1.0-68-3	0.139 - 0.049	34.13	PWG1.0-68-4	0.141 - 0.049	37.16
PWG1.0-70-1	0.136 - 0.048	32.87	PWG1.0-70-2	0.137 - 0.048	33.91	PWG1.0-70-3	0.139 - 0.049	35.96	PWG1.0-70-4	0.141 - 0.049	39.15
PWG1.0-72-1	0.136 - 0.048	34.58	PWG1.0-72-2	0.137 - 0.048	35.68	PWG1.0-72-3	0.139 - 0.049	37.83	PWG1.0-72-4	0.141 - 0.049	41.19
PWG1.0-75-1	0.136 - 0.048	37.21	PWG1.0-75-2	0.137 - 0.048	38.40	PWG1.0-75-3	0.139 - 0.049	40.71	PWG1.0-75-4	0.141 - 0.049	44.33
PWG1.0-78-1	0.136 - 0.048	39.93	PWG1.0-78-2	0.137 - 0.048	41.21	PWG1.0-78-3	0.139 - 0.049	43.69	PWG1.0-78-4	0.141 - 0.049	47.00
PWG1.0-80-1	0.136 - 0.048	41.80	PWG1.0-80-2	0.137 - 0.048	43.13	PWG1.0-80-3	0.139 - 0.049	45.73	PWG1.0-80-4	0.141 - 0.049	48.33
PWG1.0-82-1	0.136 - 0.048	43.70	PWG1.0-82-2	0.137 - 0.048	45.09	PWG1.0-82-3	0.139 - 0.049	47.81	PWG1.0-82-4	0.141 - 0.049	49.67
PWG1.0-85-1	0.136 - 0.048	46.62	PWG1.0-85-2	0.137 - 0.048	48.10	PWG1.0-85-3	0.139 - 0.049	51.00	PWG1.0-85-4	0.141 - 0.049	51.68
PWG1.0-90-1	0.139 - 0.045	51.67	PWG1.0-90-2	0.140 - 0.046	53.31	PWG1.0-90-3	0.141 - 0.046	56.53	PWG1.0-90-4	0.144 - 0.047	55.05
PWG1.0-95-1	0.139 - 0.045	56.95	PWG1.0-95-2	0.140 - 0.046	58.76	PWG1.0-95-3	0.141 - 0.046	61.05	PWG1.0-95-4	0.144 - 0.047	58.43
PWG1.0-100-1	0.139 - 0.045	62.46	PWG1.0-100-2	0.140 - 0.046	64.45	PWG1.0-100-3	0.141 - 0.046	64.60	PWG1.0-100-4	0.144 - 0.047	61.83
PWG1.0-105-1	0.139 - 0.045	68.19	PWG1.0-105-2	0.140 - 0.046	68.61	PWG1.0-105-3	0.141 - 0.046	67.98	PWG1.0-105-4	0.144 - 0.047	65.25
PWG1.0-110-1	0.139 - 0.045	74.15	PWG1.0-110-2	0.140 - 0.046	72.18	PWG1.0-110-3	0.141 - 0.046	71.22	PWG1.0-110-4	0.144 - 0.047	68.68
PWG1.0-115-1	0.139 - 0.045	80.32	PWG1.0-115-2	0.140 - 0.046	75.76	PWG1.0-115-3	0.141 - 0.046	74.46	PWG1.0-115-4	0.144 - 0.047	72.12
PWG1.0-120-1	0.139 - 0.045	84.71	PWG1.0-120-2	0.140 - 0.046	79.36	PWG1.0-120-3	0.141 - 0.046	77.69	PWG1.0-120-4	0.144 - 0.047	75.58
PWG1.0-125-1	0.139 - 0.045	88.57	PWG1.0-125-2	0.140 - 0.046	82.97	PWG1.0-125-3	0.141 - 0.046	80.93	PWG1.0-125-4	0.144 - 0.047	79.05

**PWG
1.5m_x**

PRECISION GEARS

1.5 Module Bronze Wormwheel α 20° PA

Quality Grade Wormwheel 7e25 DIN 3974/3967



DIN 3967 Tooth Thickness tol.

Part Number				No. of Teeth	Centre Distance	Ref. Dia.	Wheel Throat	Tip Dia.	Bore Dia. H7	Max. Bore Dia. H7	Hub Dia.
1 Start	2 Start	3 Start	4 Start	z_2	a	d_2	d_{a2}	d_{e2}	d_j	d_j	D_{hub}
PWG1.5-15-1	PWG1.5-15-2	PWG1.5-15-3	PWG1.5-15-4	15	21.25	22.5	25.5	27.0	6	10	20
PWG1.5-16-1	PWG1.5-16-2	PWG1.5-16-3	PWG1.5-16-4	16	22.00	24.0	27.0	28.5	6	10	20
PWG1.5-17-1	PWG1.5-17-2	PWG1.5-17-3	PWG1.5-17-4	17	22.75	25.5	28.5	30.0	6	10	20
PWG1.5-18-1	PWG1.5-18-2	PWG1.5-18-3	PWG1.5-18-4	18	23.50	27.0	30.0	31.5	6	10	20
PWG1.5-19-1	PWG1.5-19-2	PWG1.5-19-3	PWG1.5-19-4	19	24.25	28.5	31.5	33.0	6	10	20
PWG1.5-20-1	PWG1.5-20-2	PWG1.5-20-3	PWG1.5-20-4	20	25.00	30.0	33.0	34.5	6	10	20
PWG1.5-21-1	PWG1.5-21-2	PWG1.5-21-3	PWG1.5-21-4	21	25.75	31.5	34.5	36.0	8	14	25
PWG1.5-22-1	PWG1.5-22-2	PWG1.5-22-3	PWG1.5-22-4	22	26.50	33.0	36.0	37.5	8	14	25
PWG1.5-23-1	PWG1.5-23-2	PWG1.5-23-3	PWG1.5-23-4	23	27.25	34.5	37.5	39.0	8	14	25
PWG1.5-24-1	PWG1.5-24-2	PWG1.5-24-3	PWG1.5-24-4	24	28.00	36.0	39.0	40.5	8	14	25
PWG1.5-25-1	PWG1.5-25-2	PWG1.5-25-3	PWG1.5-25-4	25	28.75	37.5	40.5	42.0	8	14	25
PWG1.5-26-1	PWG1.5-26-2	PWG1.5-26-3	PWG1.5-26-4	26	29.50	39.0	42.0	43.5	8	14	25
PWG1.5-27-1	PWG1.5-27-2	PWG1.5-27-3	PWG1.5-27-4	27	30.25	40.5	43.5	45.0	8	14	25
PWG1.5-28-1	PWG1.5-28-2	PWG1.5-28-3	PWG1.5-28-4	28	31.00	42.0	45.0	46.5	8	14	25
PWG1.5-29-1	PWG1.5-29-2	PWG1.5-29-3	PWG1.5-29-4	29	31.75	43.5	46.5	48.0	10	20	35
PWG1.5-30-1	PWG1.5-30-2	PWG1.5-30-3	PWG1.5-30-4	30	32.50	45.0	48.0	49.5	10	20	35
PWG1.5-32-1	PWG1.5-32-2	PWG1.5-32-3	PWG1.5-32-4	32	34.00	48.0	51.0	52.5	10	20	35
PWG1.5-35-1	PWG1.5-35-2	PWG1.5-35-3	PWG1.5-35-4	35	36.25	52.5	55.5	57.0	10	20	35
PWG1.5-38-1	PWG1.5-38-2	PWG1.5-38-3	PWG1.5-38-4	38	38.50	57.0	60.0	61.5	12	25	45
PWG1.5-40-1	PWG1.5-40-2	PWG1.5-40-3	PWG1.5-40-4	40	40.00	60.0	63.0	64.5	12	25	45
PWG1.5-42-1	PWG1.5-42-2	PWG1.5-42-3	PWG1.5-42-4	42	41.50	63.0	66.0	67.5	12	25	45
PWG1.5-45-1	PWG1.5-45-2	PWG1.5-45-3	PWG1.5-45-4	45	43.75	67.5	70.5	72.0	12	25	45
PWG1.5-48-1	PWG1.5-48-2	PWG1.5-48-3	PWG1.5-48-4	48	46.00	72.0	75.0	76.5	12	25	45
PWG1.5-50-1	PWG1.5-50-2	PWG1.5-50-3	PWG1.5-50-4	50	47.50	75.0	78.0	79.5	14	35	55
PWG1.5-52-1	PWG1.5-52-2	PWG1.5-52-3	PWG1.5-52-4	52	49.00	78.0	81.0	82.5	14	35	55
PWG1.5-55-1	PWG1.5-55-2	PWG1.5-55-3	PWG1.5-55-4	55	51.25	82.5	85.5	87.0	14	35	55
PWG1.5-58-1	PWG1.5-58-2	PWG1.5-58-3	PWG1.5-58-4	58	53.50	87.0	90.0	91.5	14	35	55
PWG1.5-60-1	PWG1.5-60-2	PWG1.5-60-3	PWG1.5-60-4	60	55.00	90.0	93.0	94.5	14	35	55
PWG1.5-62-1	PWG1.5-62-2	PWG1.5-62-3	PWG1.5-62-4	62	56.50	93.0	96.0	97.5	14	35	55
PWG1.5-65-1	PWG1.5-65-2	PWG1.5-65-3	PWG1.5-65-4	65	58.75	97.5	100.5	102.0	14	35	55
PWG1.5-68-1	PWG1.5-68-2	PWG1.5-68-3	PWG1.5-68-4	68	61.00	102.0	105.0	106.5	16	40	65
PWG1.5-70-1	PWG1.5-70-2	PWG1.5-70-3	PWG1.5-70-4	70	62.50	105.0	108.0	109.5	16	40	65
PWG1.5-72-1	PWG1.5-72-2	PWG1.5-72-3	PWG1.5-72-4	72	64.00	108.0	111.0	112.5	16	40	65
PWG1.5-75-1	PWG1.5-75-2	PWG1.5-75-3	PWG1.5-75-4	75	66.25	112.5	115.5	117.0	16	40	65
PWG1.5-78-1	PWG1.5-78-2	PWG1.5-78-3	PWG1.5-78-4	78	68.50	117.0	120.0	121.5	16	40	65
PWG1.5-80-1	PWG1.5-80-2	PWG1.5-80-3	PWG1.5-80-4	80	70.00	120.0	123.0	124.5	16	40	65
PWG1.5-82-1	PWG1.5-82-2	PWG1.5-82-3	PWG1.5-82-4	82	71.50	123.0	126.0	127.5	16	40	65

**PWG
1.5m_x**

PRECISION GEARS

1.5 Module Bronze Wormwheel α 20° PA

Quality Grade Wormwheel 7e25 DIN 3974/3967

Standard Part **PWG 1.5 50 1**

Modified Part **PWG 1.5 50 3 20 K T**

PWG - Precision Worm Gear
Quality Grade 7e25 DIN 3974/3967
Other Quality Grades available.
See Technical

m_x Module - Cut with DIN 867 1.25/0.20/1.0
Ref. Tooth Profile Topping WD = 2.25 x m_x

Number of Teeth **z**

Number of Starts on Worm
Ratio = $\frac{(z_2) \text{ No. of teeth on wheel}}{(z_1) \text{ No. of starts on worm}}$

T = 1 x Tapped hole **2T** = 2 x Tapped holes
P = 1 x Pin Hole **PT** = 1 x Pin Hole through
All threads metric as standard.
See Technical

K- Keyway supplied to
DIN 6885 - Js9 tolerance.
See Technical

To specify different bore enter size required
Example: 20 = 20mm H7 etc
See Technical

Material: Bronze CA104. RH lead angle.

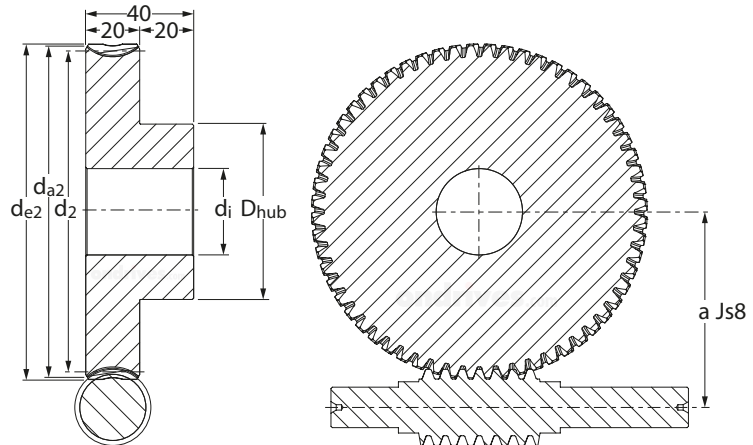
Part Number 1 Start	Backlash (mm) j _{t,e} (max) j _{t,i} (min)	Torque T ₂ Nm n ₂ 100 Rpm	Part Number 2 Start	Backlash (mm) j _{t,e} (max) j _{t,i} (min)	Torque T ₂ Nm n ₂ 100 Rpm	Part Number 3 Start	Backlash (mm) j _{t,e} (max) j _{t,i} (min)	Torque T ₂ Nm n ₂ 100 Rpm	Part Number 4 Start	Backlash (mm) j _{t,e} (max) j _{t,i} (min)	Torque T ₂ Nm n ₂ 100 Rpm
PWG1.5-15-1	0.114 - 0.040	5.29	PWG1.5-15-2	0.115 - 0.040	5.18	PWG1.5-15-3	0.117 - 0.041	5.25	PWG1.5-15-4	0.119 - 0.042	5.63
PWG1.5-16-1	0.114 - 0.040	5.95	PWG1.5-16-2	0.115 - 0.040	5.81	PWG1.5-16-3	0.117 - 0.041	5.90	PWG1.5-16-4	0.119 - 0.042	6.32
PWG1.5-17-1	0.114 - 0.040	6.63	PWG1.5-17-2	0.115 - 0.040	6.48	PWG1.5-17-3	0.117 - 0.041	6.70	PWG1.5-17-4	0.119 - 0.042	7.05
PWG1.5-18-1	0.114 - 0.040	7.35	PWG1.5-18-2	0.115 - 0.040	7.19	PWG1.5-18-3	0.117 - 0.041	7.43	PWG1.5-18-4	0.119 - 0.042	7.81
PWG1.5-19-1	0.114 - 0.040	8.10	PWG1.5-19-2	0.115 - 0.040	8.06	PWG1.5-19-3	0.117 - 0.041	8.19	PWG1.5-19-4	0.119 - 0.042	8.69
PWG1.5-20-1	0.114 - 0.040	8.89	PWG1.5-20-2	0.115 - 0.040	8.84	PWG1.5-20-3	0.117 - 0.041	9.15	PWG1.5-20-4	0.119 - 0.042	9.53
PWG1.5-21-1	0.114 - 0.040	9.70	PWG1.5-21-2	0.115 - 0.040	9.66	PWG1.5-21-3	0.117 - 0.041	9.99	PWG1.5-21-4	0.119 - 0.042	10.41
PWG1.5-22-1	0.114 - 0.040	10.72	PWG1.5-22-2	0.115 - 0.040	10.50	PWG1.5-22-3	0.117 - 0.041	10.87	PWG1.5-22-4	0.119 - 0.042	11.43
PWG1.5-23-1	0.114 - 0.040	11.62	PWG1.5-23-2	0.115 - 0.040	11.57	PWG1.5-23-3	0.117 - 0.041	11.99	PWG1.5-23-4	0.119 - 0.042	12.38
PWG1.5-24-1	0.114 - 0.040	12.54	PWG1.5-24-2	0.115 - 0.040	12.49	PWG1.5-24-3	0.117 - 0.041	12.94	PWG1.5-24-4	0.119 - 0.042	13.36
PWG1.5-25-1	0.114 - 0.040	13.72	PWG1.5-25-2	0.115 - 0.040	13.45	PWG1.5-25-3	0.117 - 0.041	13.93	PWG1.5-25-4	0.119 - 0.042	14.65
PWG1.5-26-1	0.114 - 0.040	14.72	PWG1.5-26-2	0.115 - 0.040	14.43	PWG1.5-26-3	0.117 - 0.041	15.22	PWG1.5-26-4	0.119 - 0.042	15.73
PWG1.5-27-1	0.117 - 0.038	15.89	PWG1.5-27-2	0.117 - 0.038	15.71	PWG1.5-27-3	0.119 - 0.039	16.29	PWG1.5-27-4	0.121 - 0.039	16.83
PWG1.5-28-1	0.117 - 0.038	16.96	PWG1.5-28-2	0.117 - 0.038	16.77	PWG1.5-28-3	0.119 - 0.039	17.39	PWG1.5-28-4	0.121 - 0.039	17.97
PWG1.5-29-1	0.117 - 0.038	18.07	PWG1.5-29-2	0.117 - 0.038	17.87	PWG1.5-29-3	0.119 - 0.039	18.53	PWG1.5-29-4	0.121 - 0.039	19.50
PWG1.5-30-1	0.117 - 0.038	19.36	PWG1.5-30-2	0.117 - 0.038	19.31	PWG1.5-30-3	0.119 - 0.039	19.69	PWG1.5-30-4	0.121 - 0.039	20.72
PWG1.5-32-1	0.117 - 0.038	21.74	PWG1.5-32-2	0.117 - 0.038	21.69	PWG1.5-32-3	0.119 - 0.039	22.51	PWG1.5-32-4	0.121 - 0.039	23.70
PWG1.5-35-1	0.137 - 0.048	25.55	PWG1.5-35-2	0.138 - 0.048	25.49	PWG1.5-35-3	0.140 - 0.049	26.45	PWG1.5-35-4	0.142 - 0.050	27.85
PWG1.5-38-1	0.137 - 0.048	29.62	PWG1.5-38-2	0.138 - 0.048	29.56	PWG1.5-38-3	0.140 - 0.049	31.21	PWG1.5-38-4	0.142 - 0.050	32.29
PWG1.5-40-1	0.137 - 0.048	32.49	PWG1.5-40-2	0.138 - 0.048	32.42	PWG1.5-40-3	0.140 - 0.049	34.23	PWG1.5-40-4	0.142 - 0.050	36.04
PWG1.5-42-1	0.137 - 0.048	36.04	PWG1.5-42-2	0.138 - 0.048	35.39	PWG1.5-42-3	0.140 - 0.049	37.37	PWG1.5-42-4	0.142 - 0.050	39.35
PWG1.5-45-1	0.137 - 0.048	40.80	PWG1.5-45-2	0.138 - 0.048	40.74	PWG1.5-45-3	0.140 - 0.049	43.05	PWG1.5-45-4	0.142 - 0.050	44.56
PWG1.5-48-1	0.137 - 0.048	45.83	PWG1.5-48-2	0.138 - 0.048	45.76	PWG1.5-48-3	0.140 - 0.049	48.35	PWG1.5-48-4	0.142 - 0.050	50.05
PWG1.5-50-1	0.137 - 0.048	50.09	PWG1.5-50-2	0.138 - 0.048	50.05	PWG1.5-50-3	0.140 - 0.049	52.03	PWG1.5-50-4	0.142 - 0.050	54.81
PWG1.5-52-1	0.137 - 0.048	53.76	PWG1.5-52-2	0.138 - 0.048	53.72	PWG1.5-52-3	0.140 - 0.049	55.84	PWG1.5-52-4	0.142 - 0.050	58.82
PWG1.5-55-1	0.139 - 0.045	59.47	PWG1.5-55-2	0.140 - 0.046	59.90	PWG1.5-55-3	0.142 - 0.046	61.77	PWG1.5-55-4	0.145 - 0.047	65.06
PWG1.5-58-1	0.139 - 0.045	65.43	PWG1.5-58-2	0.140 - 0.046	65.91	PWG1.5-58-3	0.142 - 0.046	69.12	PWG1.5-58-4	0.145 - 0.047	72.83
PWG1.5-60-1	0.139 - 0.045	69.55	PWG1.5-60-2	0.140 - 0.046	70.62	PWG1.5-60-3	0.142 - 0.046	73.47	PWG1.5-60-4	0.145 - 0.047	77.41
PWG1.5-62-1	0.139 - 0.045	73.78	PWG1.5-62-2	0.140 - 0.046	74.91	PWG1.5-62-3	0.142 - 0.046	77.94	PWG1.5-62-4	0.145 - 0.047	82.11
PWG1.5-65-1	0.139 - 0.045	83.42	PWG1.5-65-2	0.140 - 0.046	81.56	PWG1.5-65-3	0.142 - 0.046	84.86	PWG1.5-65-4	0.145 - 0.047	89.40
PWG1.5-68-1	0.139 - 0.045	90.47	PWG1.5-68-2	0.140 - 0.046	88.46	PWG1.5-68-3	0.142 - 0.046	92.04	PWG1.5-68-4	0.145 - 0.047	96.97
PWG1.5-70-1	0.139 - 0.045	95.32	PWG1.5-70-2	0.140 - 0.046	93.20	PWG1.5-70-3	0.142 - 0.046	96.97	PWG1.5-70-4	0.145 - 0.047	102.16
PWG1.5-72-1	0.139 - 0.045	100.28	PWG1.5-72-2	0.140 - 0.046	98.05	PWG1.5-72-3	0.142 - 0.046	102.01	PWG1.5-72-4	0.145 - 0.047	107.48
PWG1.5-75-1	0.139 - 0.045	107.92	PWG1.5-75-2	0.140 - 0.046	105.53	PWG1.5-75-3	0.142 - 0.046	111.62	PWG1.5-75-4	0.145 - 0.047	117.63
PWG1.5-78-1	0.139 - 0.045	115.82	PWG1.5-78-2	0.140 - 0.046	113.24	PWG1.5-78-3	0.142 - 0.046	119.78	PWG1.5-78-4	0.145 - 0.047	126.24
PWG1.5-80-1	0.139 - 0.045	121.32	PWG1.5-80-2	0.140 - 0.046	118.52	PWG1.5-80-3	0.142 - 0.046	125.37	PWG1.5-80-4	0.145 - 0.047	132.12
PWG1.5-82-1	0.139 - 0.045	126.83	PWG1.5-82-2	0.140 - 0.046	123.91	PWG1.5-82-3	0.142 - 0.046	131.07	PWG1.5-82-4	0.145 - 0.047	138.13

**PWG
2.0m_x**

PRECISION GEARS

2.0 Module Bronze Wormwheel α 20° PA

Quality Grade Wormwheel 7e25 DIN 3974/3967



DIN 3967 Tooth Thickness tol.

Part Number				No. of Teeth z_2	Centre Distance a	Ref. Dia. d_2	Wheel Throat d_{a2}	Tip Dia. d_{e2}	Bore Dia. H7 d_i	Max. Bore Dia. H7 d_j	Hub Dia. D_{hub}
1 Start	2 Start	3 Start	4 Start								
PWG 2.0-15-1	PWG 2.0-15-2	PWG 2.0-15-3	PWG 2.0-15-4	15	27.5	30	34	36	10	12	25
PWG 2.0-16-1	PWG 2.0-16-2	PWG 2.0-16-3	PWG 2.0-16-4	16	28.5	32	36	38	10	12	25
PWG 2.0-17-1	PWG 2.0-17-2	PWG 2.0-17-3	PWG 2.0-17-4	17	29.5	34	38	40	10	12	25
PWG 2.0-18-1	PWG 2.0-18-2	PWG 2.0-18-3	PWG 2.0-18-4	18	30.5	36	40	42	10	12	25
PWG 2.0-19-1	PWG 2.0-19-2	PWG 2.0-19-3	PWG 2.0-19-4	19	31.5	38	42	44	10	12	25
PWG 2.0-20-1	PWG 2.0-20-2	PWG 2.0-20-3	PWG 2.0-20-4	20	32.5	40	44	46	10	12	25
PWG 2.0-21-1	PWG 2.0-21-2	PWG 2.0-21-3	PWG 2.0-21-4	21	33.5	42	46	48	12	20	35
PWG 2.0-22-1	PWG 2.0-22-2	PWG 2.0-22-3	PWG 2.0-22-4	22	34.5	44	48	50	12	20	35
PWG 2.0-23-1	PWG 2.0-23-2	PWG 2.0-23-3	PWG 2.0-23-4	23	35.5	46	50	52	12	20	35
PWG 2.0-24-1	PWG 2.0-24-2	PWG 2.0-24-3	PWG 2.0-24-4	24	36.5	48	52	54	12	20	35
PWG 2.0-25-1	PWG 2.0-25-2	PWG 2.0-25-3	PWG 2.0-25-4	25	37.5	50	54	56	12	20	35
PWG 2.0-26-1	PWG 2.0-26-2	PWG 2.0-26-3	PWG 2.0-26-4	26	38.5	52	56	58	12	20	35
PWG 2.0-27-1	PWG 2.0-27-2	PWG 2.0-27-3	PWG 2.0-27-4	27	39.5	54	58	60	12	20	35
PWG 2.0-28-1	PWG 2.0-28-2	PWG 2.0-28-3	PWG 2.0-28-4	28	40.5	56	60	62	12	20	35
PWG 2.0-29-1	PWG 2.0-29-2	PWG 2.0-29-3	PWG 2.0-29-4	29	41.5	58	62	64	14	30	50
PWG 2.0-30-1	PWG 2.0-30-2	PWG 2.0-30-3	PWG 2.0-30-4	30	42.5	60	64	66	14	30	50
PWG 2.0-32-1	PWG 2.0-32-2	PWG 2.0-32-3	PWG 2.0-32-4	32	44.5	64	68	70	14	30	50
PWG 2.0-35-1	PWG 2.0-35-2	PWG 2.0-35-3	PWG 2.0-35-4	35	47.5	70	74	76	14	30	50
PWG 2.0-38-1	PWG 2.0-38-2	PWG 2.0-38-3	PWG 2.0-38-4	38	50.5	76	80	82	14	30	50
PWG 2.0-40-1	PWG 2.0-40-2	PWG 2.0-40-3	PWG 2.0-40-4	40	52.5	80	84	86	14	30	50
PWG 2.0-42-1	PWG 2.0-42-2	PWG 2.0-42-3	PWG 2.0-42-4	42	54.5	84	88	90	14	30	50
PWG 2.0-45-1	PWG 2.0-45-2	PWG 2.0-45-3	PWG 2.0-45-4	45	57.5	90	94	96	14	30	50
PWG 2.0-48-1	PWG 2.0-48-2	PWG 2.0-48-3	PWG 2.0-48-4	48	60.5	96	100	102	14	30	50
PWG 2.0-50-1	PWG 2.0-50-2	PWG 2.0-50-3	PWG 2.0-50-4	50	62.5	100	104	106	16	40	65
PWG 2.0-52-1	PWG 2.0-52-2	PWG 2.0-52-3	PWG 2.0-52-4	52	64.5	104	108	110	16	40	65
PWG 2.0-55-1	PWG 2.0-55-2	PWG 2.0-55-3	PWG 2.0-55-4	55	67.5	110	114	116	16	40	65
PWG 2.0-58-1	PWG 2.0-58-2	PWG 2.0-58-3	PWG 2.0-58-4	58	70.5	116	120	122	16	40	65
PWG 2.0-60-1	PWG 2.0-60-2	PWG 2.0-60-3	PWG 2.0-60-4	60	72.5	120	124	126	16	40	65
PWG 2.0-62-1	PWG 2.0-62-2	PWG 2.0-62-3	PWG 2.0-62-4	62	74.5	124	128	130	16	40	65

**PWG
2.0m_x**

PRECISION GEARS

2.0 Module Bronze Wormwheel α 20° PA

Quality Grade Wormwheel 7e25 DIN 3974/3967

Standard Part **PWG 2.0 50 1**

Modified Part **PWG 2.0 50 3 20 K T**

PWG - Precision Worm Gear
Quality Grade 7e25 DIN 3974/3967
Other Quality Grades available.
See Technical

m_x Module - Cut with DIN 867 1.25/0.20/1.0
Ref. Tooth Profile Topping WD = 2.25 x m_x

Number of Teeth **z**

Number of Starts on Worm
Ratio = $\frac{(z_2) \text{ No. of teeth on wheel}}{(z_1) \text{ No. of starts on worm}}$

T = 1 x Tapped hole **2T** = 2 x Tapped holes
P = 1 x Pin Hole **PT** = 1 x Pin Hole through
All threads metric as standard.
See Technical

K- Keyway supplied to
DIN 6885 - Js9 tolerance.
See Technical

To specify different bore enter size required
Example: 20 = 20mm H7 etc
See Technical

Material: Bronze CA104. RH lead angle.

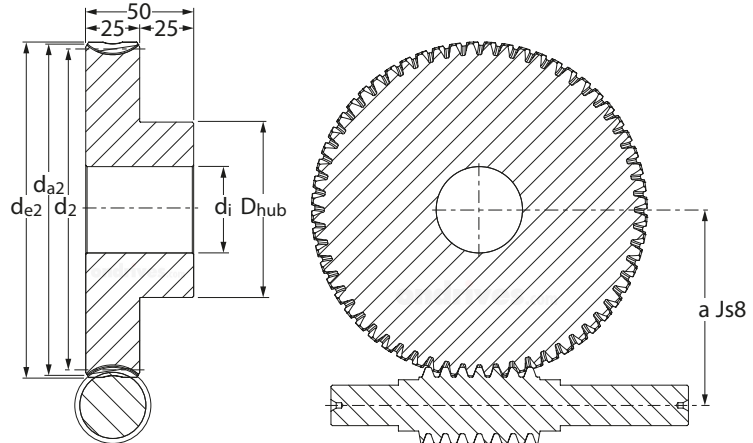
Part Number 1 Start	Backlash (mm) j _{t,e} (max) j _{t,i} (min)	Torque T ₂ Nm n ₂ 100 Rpm	Part Number 2 Start	Backlash (mm) j _{t,e} (max) j _{t,i} (min)	Torque T ₂ Nm n ₂ 100 Rpm	Part Number 3 Start	Backlash (mm) j _{t,e} (max) j _{t,i} (min)	Torque T ₂ Nm n ₂ 100 Rpm	Part Number 4 Start	Backlash (mm) j _{t,e} (max) j _{t,i} (min)	Torque T ₂ Nm n ₂ 100 Rpm
PWG 2.0-15-1	0.114 - 0.040	11.30	PWG 2.0-15-2	0.115 - 0.040	11.53	PWG 2.0-15-3	0.117 - 0.041	11.68	PWG 2.0-15-4	0.120 - 0.042	12.35
PWG 2.0-16-1	0.114 - 0.040	12.69	PWG 2.0-16-2	0.115 - 0.040	12.96	PWG 2.0-16-3	0.117 - 0.041	13.24	PWG 2.0-16-4	0.120 - 0.042	13.87
PWG 2.0-17-1	0.114 - 0.040	14.16	PWG 2.0-17-2	0.115 - 0.040	14.45	PWG 2.0-17-3	0.117 - 0.041	14.77	PWG 2.0-17-4	0.120 - 0.042	15.47
PWG 2.0-18-1	0.117 - 0.038	15.69	PWG 2.0-18-2	0.118 - 0.038	16.02	PWG 2.0-18-3	0.119 - 0.039	16.37	PWG 2.0-18-4	0.122 - 0.040	17.14
PWG 2.0-19-1	0.117 - 0.038	17.30	PWG 2.0-19-2	0.118 - 0.038	17.65	PWG 2.0-19-3	0.119 - 0.039	18.04	PWG 2.0-19-4	0.122 - 0.040	19.08
PWG 2.0-20-1	0.117 - 0.038	19.29	PWG 2.0-20-2	0.118 - 0.038	19.36	PWG 2.0-20-3	0.119 - 0.039	19.79	PWG 2.0-20-4	0.122 - 0.040	20.92
PWG 2.0-21-1	0.117 - 0.038	21.06	PWG 2.0-21-2	0.118 - 0.038	21.14	PWG 2.0-21-3	0.119 - 0.039	22.00	PWG 2.0-21-4	0.122 - 0.040	22.84
PWG 2.0-22-1	0.117 - 0.038	23.27	PWG 2.0-22-2	0.118 - 0.038	23.18	PWG 2.0-22-3	0.119 - 0.039	23.92	PWG 2.0-22-4	0.122 - 0.040	25.07
PWG 2.0-23-1	0.117 - 0.038	25.62	PWG 2.0-23-2	0.118 - 0.038	25.11	PWG 2.0-23-3	0.119 - 0.039	25.92	PWG 2.0-23-4	0.122 - 0.040	27.16
PWG 2.0-24-1	0.117 - 0.038	28.09	PWG 2.0-24-2	0.118 - 0.038	27.11	PWG 2.0-24-3	0.119 - 0.039	28.49	PWG 2.0-24-4	0.122 - 0.040	29.32
PWG 2.0-25-1	0.117 - 0.038	30.24	PWG 2.0-25-2	0.118 - 0.038	29.18	PWG 2.0-25-3	0.119 - 0.039	31.48	PWG 2.0-25-4	0.122 - 0.040	32.16
PWG 2.0-26-1	0.137 - 0.048	32.45	PWG 2.0-26-2	0.138 - 0.048	31.31	PWG 2.0-26-3	0.140 - 0.049	33.79	PWG 2.0-26-4	0.143 - 0.050	35.15
PWG 2.0-27-1	0.137 - 0.048	34.73	PWG 2.0-27-2	0.138 - 0.048	34.09	PWG 2.0-27-3	0.140 - 0.049	36.16	PWG 2.0-27-4	0.143 - 0.050	37.62
PWG 2.0-28-1	0.137 - 0.048	37.08	PWG 2.0-28-2	0.138 - 0.048	36.40	PWG 2.0-28-3	0.140 - 0.049	38.61	PWG 2.0-28-4	0.143 - 0.050	40.16
PWG 2.0-29-1	0.137 - 0.048	39.50	PWG 2.0-29-2	0.138 - 0.048	38.77	PWG 2.0-29-3	0.140 - 0.049	41.12	PWG 2.0-29-4	0.143 - 0.050	43.56
PWG 2.0-30-1	0.137 - 0.048	41.98	PWG 2.0-30-2	0.138 - 0.048	41.91	PWG 2.0-30-3	0.140 - 0.049	43.71	PWG 2.0-30-4	0.143 - 0.050	46.30
PWG 2.0-32-1	0.137 - 0.048	47.15	PWG 2.0-32-2	0.138 - 0.048	47.08	PWG 2.0-32-3	0.140 - 0.049	49.52	PWG 2.0-32-4	0.143 - 0.050	52.00
PWG 2.0-35-1	0.137 - 0.048	55.41	PWG 2.0-35-2	0.138 - 0.048	55.32	PWG 2.0-35-3	0.140 - 0.049	58.19	PWG 2.0-35-4	0.143 - 0.050	62.20
PWG 2.0-38-1	0.139 - 0.045	64.25	PWG 2.0-38-2	0.141 - 0.046	64.14	PWG 2.0-38-3	0.143 - 0.047	67.48	PWG 2.0-38-4	0.146 - 0.048	72.75
PWG 2.0-40-1	0.139 - 0.045	70.46	PWG 2.0-40-2	0.141 - 0.046	71.52	PWG 2.0-40-3	0.143 - 0.047	74.00	PWG 2.0-40-4	0.146 - 0.048	79.79
PWG 2.0-42-1	0.139 - 0.045	76.93	PWG 2.0-42-2	0.141 - 0.046	78.08	PWG 2.0-42-3	0.143 - 0.047	82.19	PWG 2.0-42-4	0.146 - 0.048	87.11
PWG 2.0-45-1	0.139 - 0.045	88.46	PWG 2.0-45-2	0.141 - 0.046	91.30	PWG 2.0-45-3	0.143 - 0.047	93.06	PWG 2.0-45-4	0.146 - 0.048	99.49
PWG 2.0-48-1	0.139 - 0.045	99.36	PWG 2.0-48-2	0.141 - 0.046	104.18	PWG 2.0-48-3	0.143 - 0.047	104.52	PWG 2.0-48-4	0.146 - 0.048	111.75
PWG 2.0-50-1	0.139 - 0.045	106.94	PWG 2.0-50-2	0.141 - 0.046	112.12	PWG 2.0-50-3	0.143 - 0.047	114.40	PWG 2.0-50-4	0.146 - 0.048	120.27
PWG 2.0-52-1	0.139 - 0.045	114.76	PWG 2.0-52-2	0.141 - 0.046	120.32	PWG 2.0-52-3	0.143 - 0.047	122.76	PWG 2.0-52-4	0.146 - 0.048	129.06
PWG 2.0-55-1	0.139 - 0.045	126.95	PWG 2.0-55-2	0.141 - 0.046	133.11	PWG 2.0-55-3	0.143 - 0.047	135.80	PWG 2.0-55-4	0.146 - 0.048	145.24
PWG 2.0-58-1	0.139 - 0.045	139.68	PWG 2.0-58-2	0.141 - 0.046	146.46	PWG 2.0-58-3	0.143 - 0.047	149.43	PWG 2.0-58-4	0.146 - 0.048	159.81
PWG 2.0-60-1	0.139 - 0.045	153.04	PWG 2.0-60-2	0.141 - 0.046	155.68	PWG 2.0-60-3	0.143 - 0.047	161.48	PWG 2.0-60-4	0.146 - 0.048	169.86
PWG 2.0-62-1	0.139 - 0.045	162.35	PWG 2.0-62-2	0.141 - 0.046	165.14	PWG 2.0-62-3	0.143 - 0.047	171.30	PWG 2.0-62-4	0.146 - 0.048	180.19

**PWG
2.5m_x**

PRECISION GEARS

2.5 Module Bronze Wormwheel α 20° PA

Quality Grade Wormwheel 8e25 DIN 3974/3967



DIN 3967 Tooth Thickness tol.

Part Number				No. of Teeth z_2	Centre Distance a	Ref. Dia. d_2	Wheel Throat d_{a2}	Tip Dia. d_{e2}	Bore Dia. H7 d_j	Max. Bore Dia. H7 d_j	Hub Dia. D_{hub}
1 Start	2 Start	3 Start	4 Start								
PWG 2.5-15-1	PWG 2.5-15-2	PWG 2.5-15-3	PWG 2.5-15-4	15	36.25	37.5	42.5	45.0	10	16	30
PWG 2.5-16-1	PWG 2.5-16-2	PWG 2.5-16-3	PWG 2.5-16-4	16	37.50	40.0	45.0	47.5	10	16	30
PWG 2.5-17-1	PWG 2.5-17-2	PWG 2.5-17-3	PWG 2.5-17-4	17	38.75	42.5	47.5	50.0	10	16	30
PWG 2.5-18-1	PWG 2.5-18-2	PWG 2.5-18-3	PWG 2.5-18-4	18	40.00	45.0	50.0	52.5	10	16	30
PWG 2.5-19-1	PWG 2.5-19-2	PWG 2.5-19-3	PWG 2.5-19-4	19	41.25	47.5	52.5	55.0	10	16	30
PWG 2.5-20-1	PWG 2.5-20-2	PWG 2.5-20-3	PWG 2.5-20-4	20	42.50	50.0	55.0	57.5	10	16	30
PWG 2.5-21-1	PWG 2.5-21-2	PWG 2.5-21-3	PWG 2.5-21-4	21	43.75	52.5	57.5	60.0	12	25	45
PWG 2.5-22-1	PWG 2.5-22-2	PWG 2.5-22-3	PWG 2.5-22-4	22	45.00	55.0	60.0	62.5	12	25	45
PWG 2.5-23-1	PWG 2.5-23-2	PWG 2.5-23-3	PWG 2.5-23-4	23	46.25	57.5	62.5	65.0	12	25	45
PWG 2.5-24-1	PWG 2.5-24-2	PWG 2.5-24-3	PWG 2.5-24-4	24	47.50	60.0	65.0	67.5	12	25	45
PWG 2.5-25-1	PWG 2.5-25-2	PWG 2.5-25-3	PWG 2.5-25-4	25	48.75	62.5	67.5	70.0	12	25	45
PWG 2.5-26-1	PWG 2.5-26-2	PWG 2.5-26-3	PWG 2.5-26-4	26	50.00	65.0	70.0	72.5	12	25	45
PWG 2.5-27-1	PWG 2.5-27-2	PWG 2.5-27-3	PWG 2.5-27-4	27	51.25	67.5	72.5	75.0	12	25	45
PWG 2.5-28-1	PWG 2.5-28-2	PWG 2.5-28-3	PWG 2.5-28-4	28	52.50	70.0	75.0	77.5	12	25	45
PWG 2.5-29-1	PWG 2.5-29-2	PWG 2.5-29-3	PWG 2.5-29-4	29	53.75	72.5	77.5	80.0	14	30	55
PWG 2.5-30-1	PWG 2.5-30-2	PWG 2.5-30-3	PWG 2.5-30-4	30	55.00	75.0	80.0	82.5	14	30	55
PWG 2.5-32-1	PWG 2.5-32-2	PWG 2.5-32-3	PWG 2.5-32-4	32	57.50	80.0	85.0	87.5	14	30	55
PWG 2.5-35-1	PWG 2.5-35-2	PWG 2.5-35-3	PWG 2.5-35-4	35	61.25	87.5	92.5	95.0	14	30	55
PWG 2.5-38-1	PWG 2.5-38-2	PWG 2.5-38-3	PWG 2.5-38-4	38	65.00	95.0	100.0	102.5	14	30	55
PWG 2.5-40-1	PWG 2.5-40-2	PWG 2.5-40-3	PWG 2.5-40-4	40	67.50	100.0	105.0	107.5	14	30	55
PWG 2.5-42-1	PWG 2.5-42-2	PWG 2.5-42-3	PWG 2.5-42-4	42	70.00	105.0	110.0	112.5	16	40	65
PWG 2.5-45-1	PWG 2.5-45-2	PWG 2.5-45-3	PWG 2.5-45-4	45	73.75	112.5	117.5	120.0	16	40	65
PWG 2.5-48-1	PWG 2.5-48-2	PWG 2.5-48-3	PWG 2.5-48-4	48	77.50	120.0	125.0	127.5	16	40	65
PWG 2.5-50-1	PWG 2.5-50-2	PWG 2.5-50-3	PWG 2.5-50-4	50	80.00	125.0	130.0	132.5	16	40	65

**PWG
2.5m_x**

PRECISION GEARS

2.5 Module Bronze Wormwheel α 20° PA

Quality Grade Wormwheel 8e25 DIN 3974/3967

Standard Part **PWG 2.5 50 1**

Modified Part **PWG 2.5 50 3 20 K T**

PWG - Precision Worm Gear
Quality Grade 7e25 DIN 3974/3967
Other Quality Grades available.
See Technical

m_x Module - Cut with DIN 867 1.25/0.20/1.0
Ref. Tooth Profile Topping WD = 2.25 x m_x

Number of Teeth **z**

Number of Starts on Worm
Ratio = $\frac{(z_2) \text{ No. of teeth on wheel}}{(z_1) \text{ No. of starts on worm}}$

T = 1 x Tapped hole **2T** = 2 x Tapped holes
P = 1 x Pin Hole **PT** = 1 x Pin Hole through
All threads metric as standard.
See Technical

K- Keyway supplied to
DIN 6885 - Js9 tolerance.
See Technical

To specify different bore enter size required
Example: 20 = 20mm H7 etc
See Technical

Material: Bronze CA104. RH lead angle.

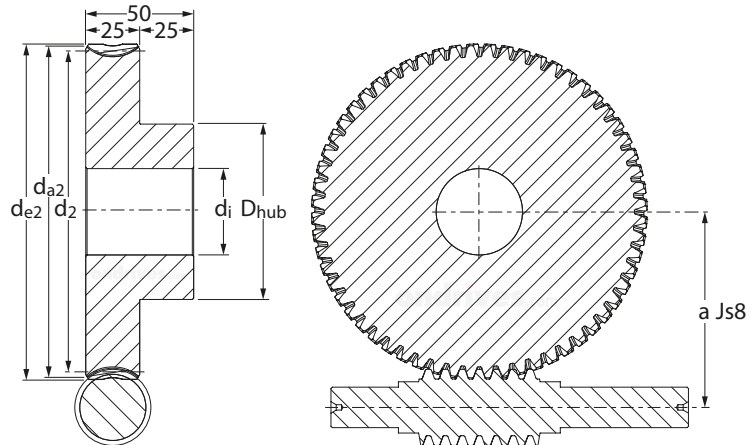
Part Number 1 Start	Backlash (mm) <i>j_{t,e}(max) j_{t,i}(min)</i>	Torque T ₂ Nm n ₂ 100 Rpm	Part Number 2 Start	Backlash (mm) <i>j_{t,e}(max) j_{t,i}(min)</i>	Torque T ₂ Nm n ₂ 100 Rpm	Part Number 3 Start	Backlash (mm) <i>j_{t,e}(max) j_{t,i}(min)</i>	Torque T ₂ Nm n ₂ 100 Rpm	Part Number 4 Start	Backlash (mm) <i>j_{t,e}(max) j_{t,i}(min)</i>	Torque T ₂ Nm n ₂ 100 Rpm
PWG 2.5-15-1	0.116 - 0.038	10.19	PWG 2.5-15-2	0.117 - 0.038	9.98	PWG 2.5-15-3	0.119 - 0.039	10.19	PWG 2.5-15-4	0.121 - 0.039	10.05
PWG 2.5-16-1	0.116 - 0.038	11.45	PWG 2.5-16-2	0.117 - 0.038	11.20	PWG 2.5-16-3	0.119 - 0.039	11.45	PWG 2.5-16-4	0.121 - 0.039	11.29
PWG 2.5-17-1	0.116 - 0.038	12.99	PWG 2.5-17-2	0.117 - 0.038	12.50	PWG 2.5-17-3	0.119 - 0.039	13.01	PWG 2.5-17-4	0.121 - 0.039	12.59
PWG 2.5-18-1	0.116 - 0.038	14.40	PWG 2.5-18-2	0.117 - 0.038	13.85	PWG 2.5-18-3	0.119 - 0.039	14.42	PWG 2.5-18-4	0.121 - 0.039	13.95
PWG 2.5-19-1	0.116 - 0.038	15.87	PWG 2.5-19-2	0.117 - 0.038	15.27	PWG 2.5-19-3	0.119 - 0.039	15.89	PWG 2.5-19-4	0.121 - 0.039	15.38
PWG 2.5-20-1	0.116 - 0.038	17.70	PWG 2.5-20-2	0.117 - 0.038	17.05	PWG 2.5-20-3	0.119 - 0.039	17.43	PWG 2.5-20-4	0.121 - 0.039	16.87
PWG 2.5-21-1	0.139 - 0.045	19.32	PWG 2.5-21-2	0.140 - 0.046	18.94	PWG 2.5-21-3	0.142 - 0.046	19.03	PWG 2.5-21-4	0.144 - 0.047	18.80
PWG 2.5-22-1	0.139 - 0.045	21.01	PWG 2.5-22-2	0.140 - 0.046	20.60	PWG 2.5-22-3	0.142 - 0.046	21.07	PWG 2.5-22-4	0.144 - 0.047	20.44
PWG 2.5-23-1	0.139 - 0.045	22.76	PWG 2.5-23-2	0.140 - 0.046	22.31	PWG 2.5-23-3	0.142 - 0.046	22.83	PWG 2.5-23-4	0.144 - 0.047	22.14
PWG 2.5-24-1	0.139 - 0.045	24.58	PWG 2.5-24-2	0.140 - 0.046	24.09	PWG 2.5-24-3	0.142 - 0.046	24.65	PWG 2.5-24-4	0.144 - 0.047	24.39
PWG 2.5-25-1	0.139 - 0.045	26.45	PWG 2.5-25-2	0.140 - 0.046	26.38	PWG 2.5-25-3	0.142 - 0.046	26.53	PWG 2.5-25-4	0.144 - 0.047	26.25
PWG 2.5-26-1	0.139 - 0.045	28.86	PWG 2.5-26-2	0.140 - 0.046	28.31	PWG 2.5-26-3	0.142 - 0.046	28.47	PWG 2.5-26-4	0.144 - 0.047	28.74
PWG 2.5-27-1	0.139 - 0.045	30.89	PWG 2.5-27-2	0.140 - 0.046	30.30	PWG 2.5-27-3	0.142 - 0.046	30.47	PWG 2.5-27-4	0.144 - 0.047	30.76
PWG 2.5-28-1	0.139 - 0.045	32.97	PWG 2.5-28-2	0.140 - 0.046	32.35	PWG 2.5-28-3	0.142 - 0.046	32.53	PWG 2.5-28-4	0.144 - 0.047	32.84
PWG 2.5-29-1	0.139 - 0.045	35.12	PWG 2.5-29-2	0.140 - 0.046	34.46	PWG 2.5-29-3	0.142 - 0.046	34.65	PWG 2.5-29-4	0.144 - 0.047	34.98
PWG 2.5-30-1	0.139 - 0.045	38.25	PWG 2.5-30-2	0.140 - 0.046	36.63	PWG 2.5-30-3	0.142 - 0.046	37.50	PWG 2.5-30-4	0.144 - 0.047	37.91
PWG 2.5-32-1	0.139 - 0.045	42.96	PWG 2.5-32-2	0.140 - 0.046	41.85	PWG 2.5-32-3	0.142 - 0.046	42.87	PWG 2.5-32-4	0.144 - 0.047	42.58
PWG 2.5-35-1	0.139 - 0.045	50.49	PWG 2.5-35-2	0.140 - 0.046	49.18	PWG 2.5-35-3	0.142 - 0.046	50.37	PWG 2.5-35-4	0.144 - 0.047	50.04
PWG 2.5-38-1	0.139 - 0.045	59.01	PWG 2.5-38-2	0.140 - 0.046	57.02	PWG 2.5-38-3	0.142 - 0.046	59.44	PWG 2.5-38-4	0.144 - 0.047	58.02
PWG 2.5-40-1	0.139 - 0.045	64.72	PWG 2.5-40-2	0.140 - 0.046	63.60	PWG 2.5-40-3	0.142 - 0.046	65.19	PWG 2.5-40-4	0.144 - 0.047	64.85
PWG 2.5-42-1	0.139 - 0.045	71.78	PWG 2.5-42-2	0.140 - 0.046	69.44	PWG 2.5-42-3	0.142 - 0.046	71.17	PWG 2.5-42-4	0.144 - 0.047	70.81
PWG 2.5-45-1	0.139 - 0.045	81.27	PWG 2.5-45-2	0.140 - 0.046	78.62	PWG 2.5-45-3	0.142 - 0.046	80.58	PWG 2.5-45-4	0.144 - 0.047	80.17
PWG 2.5-48-1	0.139 - 0.045	92.71	PWG 2.5-48-2	0.140 - 0.046	88.30	PWG 2.5-48-3	0.142 - 0.046	92.07	PWG 2.5-48-4	0.144 - 0.047	90.04
PWG 2.5-50-1	0.139 - 0.045	99.78	PWG 2.5-50-2	0.140 - 0.046	95.04	PWG 2.5-50-3	0.142 - 0.046	99.09	PWG 2.5-50-4	0.144 - 0.047	96.91

PWG-CI 2.5m_x

PRECISION GEARS

2.5 Module Cast Iron Wormwheel α 20° PA

Quality Grade Wormwheel 7e25 DIN 3974/3967



DIN 3967 Tooth Thickness tol.

Part Number				No. of Teeth z_2	Centre Distance a	Ref. Dia. d_2	Wheel Throat d_{a2}	Tip Dia. d_{e2}	Bore Dia. H7 d_j	Max. Bore Dia. H7 d_j	Hub Dia. D_{hub}
1 Start	2 Start	3 Start	4 Start								
PWG 2.5-15-1CI	PWG 2.5-15-2CI	PWG 2.5-15-3CI	PWG 2.5-15-4CI	15	36.25	37.5	42.5	45.0	10	16	30
PWG 2.5-16-1CI	PWG 2.5-16-2CI	PWG 2.5-16-3CI	PWG 2.5-16-4CI	16	37.50	40.0	45.0	47.5	10	16	30
PWG 2.5-17-1CI	PWG 2.5-17-2CI	PWG 2.5-17-3CI	PWG 2.5-17-4CI	17	38.75	42.5	47.5	50.0	10	16	30
PWG 2.5-18-1CI	PWG 2.5-18-2CI	PWG 2.5-18-3CI	PWG 2.5-18-4CI	18	40.00	45.0	50.0	52.5	10	16	30
PWG 2.5-19-1CI	PWG 2.5-19-2CI	PWG 2.5-19-3CI	PWG 2.5-19-4CI	19	41.25	47.5	52.5	55.0	10	16	30
PWG 2.5-20-1CI	PWG 2.5-20-2CI	PWG 2.5-20-3CI	PWG 2.5-20-4CI	20	42.50	50.0	55.0	57.5	10	16	30
PWG 2.5-21-1CI	PWG 2.5-21-2CI	PWG 2.5-21-3CI	PWG 2.5-21-4CI	21	43.75	52.5	57.5	60.0	12	25	45
PWG 2.5-22-1CI	PWG 2.5-22-2CI	PWG 2.5-22-3CI	PWG 2.5-22-4CI	22	45.00	55.0	60.0	62.5	12	25	45
PWG 2.5-23-1CI	PWG 2.5-23-2CI	PWG 2.5-23-3CI	PWG 2.5-23-4CI	23	46.25	57.5	62.5	65.0	12	25	45
PWG 2.5-24-1CI	PWG 2.5-24-2CI	PWG 2.5-24-3CI	PWG 2.5-24-4CI	24	47.50	60.0	65.0	67.5	12	25	45
PWG 2.5-25-1CI	PWG 2.5-25-2CI	PWG 2.5-25-3CI	PWG 2.5-25-4CI	25	48.75	62.5	67.5	70.0	12	25	45
PWG 2.5-26-1CI	PWG 2.5-26-2CI	PWG 2.5-26-3CI	PWG 2.5-26-4CI	26	50.00	65.0	70.0	72.5	12	25	45
PWG 2.5-27-1CI	PWG 2.5-27-2CI	PWG 2.5-27-3CI	PWG 2.5-27-4CI	27	51.25	67.5	72.5	75.0	12	25	45
PWG 2.5-28-1CI	PWG 2.5-28-2CI	PWG 2.5-28-3CI	PWG 2.5-28-4CI	28	52.50	70.0	75.0	77.5	12	25	45
PWG 2.5-29-1CI	PWG 2.5-29-2CI	PWG 2.5-29-3CI	PWG 2.5-29-4CI	29	53.75	72.5	77.5	80.0	14	30	55
PWG 2.5-30-1CI	PWG 2.5-30-2CI	PWG 2.5-30-3CI	PWG 2.5-30-4CI	30	55.00	75.0	80.0	82.5	14	30	55
PWG 2.5-32-1CI	PWG 2.5-32-2CI	PWG 2.5-32-3CI	PWG 2.5-32-4CI	32	57.50	80.0	85.0	87.5	14	30	55
PWG 2.5-35-1CI	PWG 2.5-35-2CI	PWG 2.5-35-3CI	PWG 2.5-35-4CI	35	61.25	87.5	92.5	95.0	14	30	55
PWG 2.5-38-1CI	PWG 2.5-38-2CI	PWG 2.5-38-3CI	PWG 2.5-38-4CI	38	65.00	95.0	100.0	102.5	14	30	55
PWG 2.5-40-1CI	PWG 2.5-40-2CI	PWG 2.5-40-3CI	PWG 2.5-40-4CI	40	67.50	100.0	105.0	107.5	14	30	55
PWG 2.5-42-1CI	PWG 2.5-42-2CI	PWG 2.5-42-3CI	PWG 2.5-42-4CI	42	70.00	105.0	110.0	112.5	16	40	65
PWG 2.5-45-1CI	PWG 2.5-45-2CI	PWG 2.5-45-3CI	PWG 2.5-45-4CI	45	73.75	112.5	117.5	120.0	16	40	65
PWG 2.5-48-1CI	PWG 2.5-48-2CI	PWG 2.5-48-3CI	PWG 2.5-48-4CI	48	77.50	120.0	125.0	127.5	16	40	65
PWG 2.5-50-1CI	PWG 2.5-50-2CI	PWG 2.5-50-3CI	PWG 2.5-50-4CI	50	80.00	125.0	130.0	132.5	16	40	65

PWG-CI 2.5m_x

PRECISION GEARS

2.5 Module Cast Iron Wormwheel α 20° PA

Quality Grade Wormwheel 7e25 DIN 3974/3967

Standard Part **PWG 2.5-50 1 CI**

Modified Part **PWG 2.5-50 3 CI 20 K T**

PWG - Precision Worm Gear
Quality Grade 8e25 DIN 3974/3967
Other Quality Grades available.
See Technical

m_x Module - Cut with DIN 867 1.25/0.20/1.0
Ref. Tooth Profile Topping WD = 2.25 x m_x

Number of Teeth **z**

Number of Starts on Worm
Ratio = $\frac{(z_2) \text{ No. of teeth on wheel}}{(z_1) \text{ No. of starts on worm}}$

T = 1 x Tapped hole **2T** = 2 x Tapped holes
P = 1 x Pin Hole **PT** = 1 x Pin Hole through
All threads metric as standard.
See Technical

K- Keyway supplied to
DIN 6885 - Js9 tolerance.
See Technical

To specify different bore enter size required
Example: 20 = 20mm H7 etc
See Technical

Standard Material = Cast Iron GG25

Material: Cast Iron GG25. RH lead angle.

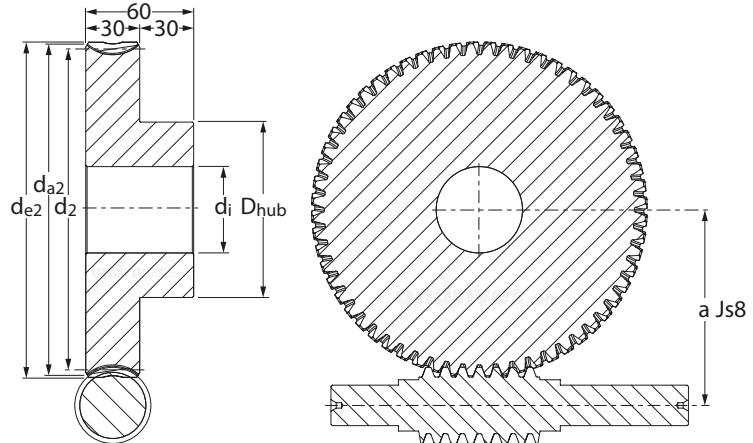
Part Number 1 Start	Backlash (mm) <i>j_{t,e}(max) j_{t,i}(min)</i>	Torque T ₂ Nm n ₂ 100 Rpm	Part Number 2 Start	Backlash (mm) <i>j_{t,e}(max) j_{t,i}(min)</i>	Torque T ₂ Nm n ₂ 100 Rpm	Part Number 3 Start	Backlash (mm) <i>j_{t,e}(max) j_{t,i}(min)</i>	Torque T ₂ Nm n ₂ 100 Rpm	Part Number 4 Start	Backlash (mm) <i>j_{t,e}(max) j_{t,i}(min)</i>	Torque T ₂ Nm n ₂ 100 Rpm
PWG 2.5-15-1CI	0.116 - 0.038	22.38	PWG 2.5-15-2CI	0.117 - 0.038	21.90	PWG 2.5-15-3CI	0.119 - 0.039	22.37	PWG 2.5-15-4CI	0.121 - 0.039	22.06
PWG 2.5-16-1CI	0.116 - 0.038	25.13	PWG 2.5-16-2CI	0.117 - 0.038	24.59	PWG 2.5-16-3CI	0.119 - 0.039	25.13	PWG 2.5-16-4CI	0.121 - 0.039	24.78
PWG 2.5-17-1CI	0.116 - 0.038	28.52	PWG 2.5-17-2CI	0.117 - 0.038	27.43	PWG 2.5-17-3CI	0.119 - 0.039	28.55	PWG 2.5-17-4CI	0.121 - 0.039	27.63
PWG 2.5-18-1CI	0.116 - 0.038	31.61	PWG 2.5-18-2CI	0.117 - 0.038	30.40	PWG 2.5-18-3CI	0.119 - 0.039	31.65	PWG 2.5-18-4CI	0.121 - 0.039	30.63
PWG 2.5-19-1CI	0.116 - 0.038	34.84	PWG 2.5-19-2CI	0.117 - 0.038	33.51	PWG 2.5-19-3CI	0.119 - 0.039	34.88	PWG 2.5-19-4CI	0.121 - 0.039	33.76
PWG 2.5-20-1CI	0.116 - 0.038	38.85	PWG 2.5-20-2CI	0.117 - 0.038	37.42	PWG 2.5-20-3CI	0.119 - 0.039	38.26	PWG 2.5-20-4CI	0.121 - 0.039	37.03
PWG 2.5-21-1CI	0.139 - 0.045	42.42	PWG 2.5-21-2CI	0.140 - 0.046	41.58	PWG 2.5-21-3CI	0.142 - 0.046	41.77	PWG 2.5-21-4CI	0.144 - 0.047	41.27
PWG 2.5-22-1CI	0.139 - 0.045	46.12	PWG 2.5-22-2CI	0.140 - 0.046	45.21	PWG 2.5-22-3CI	0.142 - 0.046	46.26	PWG 2.5-22-4CI	0.144 - 0.047	44.87
PWG 2.5-23-1CI	0.139 - 0.045	49.97	PWG 2.5-23-2CI	0.140 - 0.046	48.98	PWG 2.5-23-3CI	0.142 - 0.046	50.11	PWG 2.5-23-4CI	0.144 - 0.047	48.61
PWG 2.5-24-1CI	0.139 - 0.045	53.95	PWG 2.5-24-2CI	0.140 - 0.046	52.88	PWG 2.5-24-3CI	0.142 - 0.046	54.10	PWG 2.5-24-4CI	0.144 - 0.047	53.55
PWG 2.5-25-1CI	0.139 - 0.045	58.06	PWG 2.5-25-2CI	0.140 - 0.046	57.91	PWG 2.5-25-3CI	0.142 - 0.046	58.23	PWG 2.5-25-4CI	0.144 - 0.047	57.63
PWG 2.5-26-1CI	0.139 - 0.045	63.34	PWG 2.5-26-2CI	0.140 - 0.046	62.15	PWG 2.5-26-3CI	0.142 - 0.046	62.49	PWG 2.5-26-4CI	0.144 - 0.047	63.09
PWG 2.5-27-1CI	0.139 - 0.045	67.80	PWG 2.5-27-2CI	0.140 - 0.046	66.52	PWG 2.5-27-3CI	0.142 - 0.046	66.88	PWG 2.5-27-4CI	0.144 - 0.047	67.52
PWG 2.5-28-1CI	0.139 - 0.045	72.38	PWG 2.5-28-2CI	0.140 - 0.046	71.02	PWG 2.5-28-3CI	0.142 - 0.046	71.40	PWG 2.5-28-4CI	0.144 - 0.047	72.09
PWG 2.5-29-1CI	0.139 - 0.045	77.10	PWG 2.5-29-2CI	0.140 - 0.046	75.65	PWG 2.5-29-3CI	0.142 - 0.046	76.06	PWG 2.5-29-4CI	0.144 - 0.047	76.79
PWG 2.5-30-1CI	0.139 - 0.045	83.97	PWG 2.5-30-2CI	0.140 - 0.046	80.41	PWG 2.5-30-3CI	0.142 - 0.046	82.32	PWG 2.5-30-4CI	0.144 - 0.047	83.22
PWG 2.5-32-1CI	0.139 - 0.045	94.31	PWG 2.5-32-2CI	0.140 - 0.046	91.87	PWG 2.5-32-3CI	0.142 - 0.046	94.11	PWG 2.5-32-4CI	0.144 - 0.047	93.47
PWG 2.5-35-1CI	0.139 - 0.045	110.82	PWG 2.5-35-2CI	0.140 - 0.046	107.95	PWG 2.5-35-3CI	0.142 - 0.046	110.58	PWG 2.5-35-4CI	0.144 - 0.047	109.83
PWG 2.5-38-1CI	0.139 - 0.045	129.53	PWG 2.5-38-2CI	0.140 - 0.046	125.17	PWG 2.5-38-3CI	0.142 - 0.046	130.47	PWG 2.5-38-4CI	0.144 - 0.047	127.36
PWG 2.5-40-1CI	0.139 - 0.045	142.06	PWG 2.5-40-2CI	0.140 - 0.046	139.61	PWG 2.5-40-3CI	0.142 - 0.046	143.09	PWG 2.5-40-4CI	0.144 - 0.047	142.36
PWG 2.5-42-1CI	0.139 - 0.045	157.56	PWG 2.5-42-2CI	0.140 - 0.046	152.42	PWG 2.5-42-3CI	0.142 - 0.046	156.22	PWG 2.5-42-4CI	0.144 - 0.047	155.43
PWG 2.5-45-1CI	0.139 - 0.045	178.40	PWG 2.5-45-2CI	0.140 - 0.046	172.58	PWG 2.5-45-3CI	0.142 - 0.046	176.88	PWG 2.5-45-4CI	0.144 - 0.047	175.98
PWG 2.5-48-1CI	0.139 - 0.045	200.93	PWG 2.5-48-2CI	0.140 - 0.046	193.84	PWG 2.5-48-3CI	0.142 - 0.046	202.10	PWG 2.5-48-4CI	0.144 - 0.047	197.66
PWG 2.5-50-1CI	0.139 - 0.045	216.25	PWG 2.5-50-2CI	0.140 - 0.046	208.61	PWG 2.5-50-3CI	0.142 - 0.046	217.51	PWG 2.5-50-4CI	0.144 - 0.047	212.73

**PWG
3.0m_x**

PRECISION GEARS

3.0 Module Bronze Wormwheel α 20° PA

Quality Grade Wormwheel 7e25 DIN 3974/3967



DIN 3967 Tooth Thickness tol.

Part Number				No. of Teeth z_2	Centre Distance a	Ref. Dia. d_2	Wheel Throat d_{a2}	Tip Dia. d_{e2}	Bore Dia. H7 d_i	Max. Bore Dia. H7 d_j	Hub Dia. D_{hub}
1 Start	2 Start	3 Start	4 Start								
PWG3.0-15-1	PWG3.0-15-2	PWG3.0-15-3	PWG3.0-15-4	15	42.5	45	51	54	12	30	35
PWG3.0-16-1	PWG3.0-16-2	PWG3.0-16-3	PWG3.0-16-4	16	44.0	48	54	57	12	30	35
PWG3.0-17-1	PWG3.0-17-2	PWG3.0-17-3	PWG3.0-17-4	17	45.5	51	57	60	12	30	35
PWG3.0-18-1	PWG3.0-18-2	PWG3.0-18-3	PWG3.0-18-4	18	47.0	54	60	63	12	30	35
PWG3.0-19-1	PWG3.0-19-2	PWG3.0-19-3	PWG3.0-19-4	19	48.5	57	63	66	12	30	35
PWG3.0-20-1	PWG3.0-20-2	PWG3.0-20-3	PWG3.0-20-4	20	50.0	60	66	69	12	30	35
PWG3.0-21-1	PWG3.0-21-2	PWG3.0-21-3	PWG3.0-21-4	21	51.5	63	69	72	14	30	50
PWG3.0-22-1	PWG3.0-22-2	PWG3.0-22-3	PWG3.0-22-4	22	53.0	66	72	75	14	30	50
PWG3.0-23-1	PWG3.0-23-2	PWG3.0-23-3	PWG3.0-23-4	23	54.5	69	75	78	14	30	50
PWG3.0-24-1	PWG3.0-24-2	PWG3.0-24-3	PWG3.0-24-4	24	56.0	72	78	81	14	30	50
PWG3.0-25-1	PWG3.0-25-2	PWG3.0-25-3	PWG3.0-25-4	25	57.5	75	81	84	14	30	50
PWG3.0-26-1	PWG3.0-26-2	PWG3.0-26-3	PWG3.0-26-4	26	59.0	78	84	87	14	30	50
PWG3.0-27-1	PWG3.0-27-2	PWG3.0-27-3	PWG3.0-27-4	27	60.5	81	87	90	14	30	50
PWG3.0-28-1	PWG3.0-28-2	PWG3.0-28-3	PWG3.0-28-4	28	62.0	84	90	93	14	30	50
PWG3.0-29-1	PWG3.0-29-2	PWG3.0-29-3	PWG3.0-29-4	29	63.5	87	93	96	16	40	65
PWG3.0-30-1	PWG3.0-30-2	PWG3.0-30-3	PWG3.0-30-4	30	65.0	90	96	99	16	40	65
PWG3.0-32-1	PWG3.0-32-2	PWG3.0-32-3	PWG3.0-32-4	32	68.0	96	102	105	16	40	65
PWG3.0-35-1	PWG3.0-35-2	PWG3.0-35-3	PWG3.0-35-4	35	72.5	105	111	114	16	40	65
PWG3.0-38-1	PWG3.0-38-2	PWG3.0-38-3	PWG3.0-38-4	38	77.0	114	120	123	16	40	65
PWG3.0-40-1	PWG3.0-40-2	PWG3.0-40-3	PWG3.0-40-4	40	80.0	120	126	129	16	40	65

**PWG
3.0m_x**

PRECISION GEARS

3.0 Module Bronze Wormwheel α 20° PA

Quality Grade Wormwheel 7e25 DIN 3974/3967

Standard Part **PWG 3.0 40 1**

Modified Part **PWG 3.0 40 3 20 K T**

PWG - Precision Worm Gear
Quality Grade 7e25 DIN 3974/3967
Other Quality Grades available.
See Technical

m_x Module - Cut with DIN 867 1.25/0.20/1.0
Ref. Tooth Profile Topping WD = 2.25 x m_x

Number of Teeth **z**

Number of Starts on Worm
Ratio = $\frac{(z_2) \text{ No. of teeth on wheel}}{(z_1) \text{ No. of starts on worm}}$

T = 1 x Tapped hole **2T** = 2 x Tapped holes
P = 1 x Pin Hole **PT** = 1 x Pin Hole through
All threads metric as standard.
See Technical

K - Keyway supplied to
DIN 6885 - Js9 tolerance.
See Technical

To specify different bore enter size required
Example: 20 = 20mm H7 etc
See Technical

Material: Bronze CA104. RH lead angle.

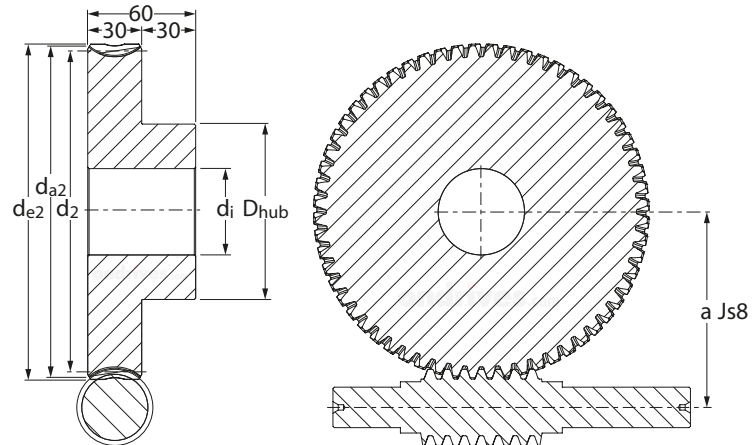
Part Number 1 Start	Backlash (mm) <i>j_{t,e}(max) j_{t,i}(min)</i>	Torque T ₂ Nm n ₂ 100 Rpm	Part Number 2 Start	Backlash (mm) <i>j_{t,e}(max) j_{t,i}(min)</i>	Torque T ₂ Nm n ₂ 100 Rpm	Part Number 3 Start	Backlash (mm) <i>j_{t,e}(max) j_{t,i}(min)</i>	Torque T ₂ Nm n ₂ 100 Rpm	Part Number 4 Start	Backlash (mm) <i>j_{t,e}(max) j_{t,i}(min)</i>	Torque T ₂ Nm n ₂ 100 Rpm
PWG3.0-15-1	0.117 - 0.038	33.19	PWG3.0-15-2	0.117 - 0.038	33.48	PWG3.0-15-3	0.119 - 0.039	33.29	PWG3.0-15-4	0.140 - 0.048	35.42
PWG3.0-16-1	0.117 - 0.038	37.27	PWG3.0-16-2	0.117 - 0.038	37.60	PWG3.0-16-3	0.119 - 0.039	37.39	PWG3.0-16-4	0.140 - 0.048	39.78
PWG3.0-17-1	0.137 - 0.048	41.57	PWG3.0-17-2	0.138 - 0.048	42.74	PWG3.0-17-3	0.140 - 0.049	42.57	PWG3.0-17-4	0.161 - 0.058	44.37
PWG3.0-18-1	0.137 - 0.048	46.08	PWG3.0-18-2	0.138 - 0.048	47.38	PWG3.0-18-3	0.140 - 0.049	48.15	PWG3.0-18-4	0.161 - 0.058	50.22
PWG3.0-19-1	0.137 - 0.048	51.73	PWG3.0-19-2	0.138 - 0.048	52.22	PWG3.0-19-3	0.140 - 0.049	53.07	PWG3.0-19-4	0.161 - 0.058	55.35
PWG3.0-20-1	0.137 - 0.048	56.73	PWG3.0-20-2	0.138 - 0.048	57.27	PWG3.0-20-3	0.140 - 0.049	59.37	PWG3.0-20-4	0.161 - 0.058	60.71
PWG3.0-21-1	0.139 - 0.045	63.06	PWG3.0-21-2	0.140 - 0.046	62.53	PWG3.0-21-3	0.142 - 0.046	64.82	PWG3.0-21-4	0.164 - 0.056	66.28
PWG3.0-22-1	0.139 - 0.045	68.57	PWG3.0-22-2	0.140 - 0.046	67.99	PWG3.0-22-3	0.142 - 0.046	71.86	PWG3.0-22-4	0.164 - 0.056	73.57
PWG3.0-23-1	0.139 - 0.045	74.28	PWG3.0-23-2	0.140 - 0.046	73.65	PWG3.0-23-3	0.142 - 0.046	79.34	PWG3.0-23-4	0.164 - 0.056	79.70
PWG3.0-24-1	0.139 - 0.045	81.63	PWG3.0-24-2	0.140 - 0.046	81.01	PWG3.0-24-3	0.142 - 0.046	85.66	PWG3.0-24-4	0.164 - 0.056	86.04
PWG3.0-25-1	0.139 - 0.045	87.85	PWG3.0-25-2	0.140 - 0.046	87.19	PWG3.0-25-3	0.142 - 0.046	92.19	PWG3.0-25-4	0.164 - 0.056	94.49
PWG3.0-26-1	0.139 - 0.045	94.28	PWG3.0-26-2	0.140 - 0.046	93.57	PWG3.0-26-3	0.142 - 0.046	98.93	PWG3.0-26-4	0.164 - 0.056	101.41
PWG3.0-27-1	0.139 - 0.045	101.79	PWG3.0-27-2	0.140 - 0.046	100.15	PWG3.0-27-3	0.142 - 0.046	105.89	PWG3.0-27-4	0.164 - 0.056	108.53
PWG3.0-28-1	0.139 - 0.045	108.68	PWG3.0-28-2	0.140 - 0.046	106.92	PWG3.0-28-3	0.142 - 0.046	113.05	PWG3.0-28-4	0.164 - 0.056	115.88
PWG3.0-29-1	0.139 - 0.045	116.77	PWG3.0-29-2	0.140 - 0.046	113.89	PWG3.0-29-3	0.142 - 0.046	120.42	PWG3.0-29-4	0.164 - 0.056	125.90
PWG3.0-30-1	0.139 - 0.045	124.12	PWG3.0-30-2	0.140 - 0.046	121.06	PWG3.0-30-3	0.142 - 0.046	128.00	PWG3.0-30-4	0.164 - 0.056	133.82
PWG3.0-32-1	0.139 - 0.045	139.41	PWG3.0-32-2	0.140 - 0.046	135.97	PWG3.0-32-3	0.142 - 0.046	146.48	PWG3.0-32-4	0.164 - 0.056	150.31
PWG3.0-35-1	0.139 - 0.045	163.81	PWG3.0-35-2	0.140 - 0.046	159.77	PWG3.0-35-3	0.142 - 0.046	172.12	PWG3.0-35-4	0.164 - 0.056	180.08
PWG3.0-38-1	0.139 - 0.045	196.49	PWG3.0-38-2	0.140 - 0.046	188.70	PWG3.0-38-3	0.142 - 0.046	199.58	PWG3.0-38-4	0.164 - 0.056	208.81
PWG3.0-40-1	0.139 - 0.045	215.50	PWG3.0-40-2	0.140 - 0.046	206.95	PWG3.0-40-3	0.142 - 0.046	218.89	PWG3.0-40-4	0.164 - 0.056	229.01

PWG-CI
3.0m_x

PRECISION GEARS

3.0 Module Cast Iron Wormwheel α 20° PA

Quality Grade Wormwheel 8e25 DIN 3974/3967



DIN 3967 Tooth Thickness tol.

Part Number				No. of Teeth z_2	Centre Distance a	Ref. Dia. d_2	Wheel Throat d_{a2}	Tip Dia. d_{e2}	Bore Dia. H7 d_j	Max. Bore Dia. H7 d_j	Hub Dia. D_{hub}
1 Start	2 Start	3 Start	4 Start								
PWG3.0-15-1CI	PWG3.0-15-2CI	PWG3.0-15-3CI	PWG3.0-15-4CI	15	42.5	45	51	54	12	30	35
PWG3.0-16-1CI	PWG3.0-16-2CI	PWG3.0-16-3CI	PWG3.0-16-4CI	16	44.0	48	54	57	12	30	35
PWG3.0-17-1CI	PWG3.0-17-2CI	PWG3.0-17-3CI	PWG3.0-17-4CI	17	45.5	51	57	60	12	30	35
PWG3.0-18-1CI	PWG3.0-18-2CI	PWG3.0-18-3CI	PWG3.0-18-4CI	18	47.0	54	60	63	12	30	35
PWG3.0-19-1CI	PWG3.0-19-2CI	PWG3.0-19-3CI	PWG3.0-19-4CI	19	48.5	57	63	66	12	30	35
PWG3.0-20-1CI	PWG3.0-20-2CI	PWG3.0-20-3CI	PWG3.0-20-4CI	20	50.0	60	66	69	12	30	35
PWG3.0-21-1CI	PWG3.0-21-2CI	PWG3.0-21-3CI	PWG3.0-21-4CI	21	51.5	63	69	72	14	30	50
PWG3.0-22-1CI	PWG3.0-22-2CI	PWG3.0-22-3CI	PWG3.0-22-4CI	22	53.0	66	72	75	14	30	50
PWG3.0-23-1CI	PWG3.0-23-2CI	PWG3.0-23-3CI	PWG3.0-23-4CI	23	54.5	69	75	78	14	30	50
PWG3.0-24-1CI	PWG3.0-24-2CI	PWG3.0-24-3CI	PWG3.0-24-4CI	24	56.0	72	78	81	14	30	50
PWG3.0-25-1CI	PWG3.0-25-2CI	PWG3.0-25-3CI	PWG3.0-25-4CI	25	57.5	75	81	84	14	30	50
PWG3.0-26-1CI	PWG3.0-26-2CI	PWG3.0-26-3CI	PWG3.0-26-4CI	26	59.0	78	84	87	14	30	50
PWG3.0-27-1CI	PWG3.0-27-2CI	PWG3.0-27-3CI	PWG3.0-27-4CI	27	60.5	81	87	90	14	30	50
PWG3.0-28-1CI	PWG3.0-28-2CI	PWG3.0-28-3CI	PWG3.0-28-4CI	28	62.0	84	90	93	14	30	50
PWG3.0-29-1CI	PWG3.0-29-2CI	PWG3.0-29-3CI	PWG3.0-29-4CI	29	63.5	87	93	96	16	40	65
PWG3.0-30-1CI	PWG3.0-30-2CI	PWG3.0-30-3CI	PWG3.0-30-4CI	30	65.0	90	96	99	16	40	65
PWG3.0-32-1CI	PWG3.0-32-2CI	PWG3.0-32-3CI	PWG3.0-32-4CI	32	68.0	96	102	105	16	40	65
PWG3.0-35-1CI	PWG3.0-35-2CI	PWG3.0-35-3CI	PWG3.0-35-4CI	35	72.5	105	111	114	16	40	65
PWG3.0-38-1CI	PWG3.0-38-2CI	PWG3.0-38-3CI	PWG3.0-38-4CI	38	77.0	114	120	123	16	40	65
PWG3.0-40-1CI	PWG3.0-40-2CI	PWG3.0-40-3CI	PWG3.0-40-4CI	40	80.0	120	126	129	16	40	65

PWG-CI 3.0m_x

PRECISION GEARS

3.0 Module Cast Iron Wormwheel α 20° PA

Quality Grade Wormwheel 8e25 DIN 3974/3967

Standard Part **PWG 3.0-40 1 CI**

Modified Part **PWG 3.0-40 3 CI 20 K T**

PWG - Precision Worm Gear
Quality Grade 8e25 DIN 3974/3967
Other Quality Grades available.
See Technical

m_x Module - Cut with DIN 867 1.25/0.20/1.0
Ref. Tooth Profile Topping WD = 2.25 x m_x

Number of Teeth **z**

Number of Starts on Worm
Ratio = $\frac{(z_2) \text{ No. of teeth on wheel}}{(z_1) \text{ No. of starts on worm}}$

T = 1 x Tapped hole **2T** = 2 x Tapped holes
P = 1 x Pin Hole **PT** = 1 x Pin Hole through
All threads metric as standard.
See Technical

K- Keyway supplied to
DIN 6885 - Js9 tolerance.
See Technical

To specify different bore enter size required
Example: 20 = 20mm H7 etc
See Technical

Standard Material = Cast Iron GG25

Material: Cast Iron GG25. RH lead angle.

Part Number 1 Start	Backlash (mm) <i>j_{t,e}(max) j_{t,i}(min)</i>	Torque T ₂ Nm n ₂ 100 Rpm	Part Number 2 Start	Backlash (mm) <i>j_{t,e}(max) j_{t,i}(min)</i>	Torque T ₂ Nm n ₂ 100 Rpm	Part Number 3 Start	Backlash (mm) <i>j_{t,e}(max) j_{t,i}(min)</i>	Torque T ₂ Nm n ₂ 100 Rpm	Part Number 4 Start	Backlash (mm) <i>j_{t,e}(max) j_{t,i}(min)</i>	Torque T ₂ Nm n ₂ 100 Rpm
PWG3.0-15-1CI	0.117 - 0.038	33.19	PWG3.0-15-2CI	0.117 - 0.038	33.48	PWG3.0-15-3CI	0.119 - 0.039	33.29	PWG3.0-15-4CI	0.140 - 0.048	35.42
PWG3.0-16-1CI	0.117 - 0.038	37.27	PWG3.0-16-2CI	0.117 - 0.038	37.60	PWG3.0-16-3CI	0.119 - 0.039	37.39	PWG3.0-16-4CI	0.140 - 0.048	39.78
PWG3.0-17-1CI	0.137 - 0.048	41.57	PWG3.0-17-2CI	0.138 - 0.048	42.74	PWG3.0-17-3CI	0.140 - 0.049	42.57	PWG3.0-17-4CI	0.161 - 0.058	44.37
PWG3.0-18-1CI	0.137 - 0.048	46.08	PWG3.0-18-2CI	0.138 - 0.048	47.38	PWG3.0-18-3CI	0.140 - 0.049	48.15	PWG3.0-18-4CI	0.161 - 0.058	50.22
PWG3.0-19-1CI	0.137 - 0.048	51.73	PWG3.0-19-2CI	0.138 - 0.048	52.22	PWG3.0-19-3CI	0.140 - 0.049	53.07	PWG3.0-19-4CI	0.161 - 0.058	55.35
PWG3.0-20-1CI	0.137 - 0.048	56.73	PWG3.0-20-2CI	0.138 - 0.048	57.27	PWG3.0-20-3CI	0.140 - 0.049	59.37	PWG3.0-20-4CI	0.161 - 0.058	60.71
PWG3.0-21-1CI	0.139 - 0.045	63.06	PWG3.0-21-2CI	0.140 - 0.046	62.53	PWG3.0-21-3CI	0.142 - 0.046	64.82	PWG3.0-21-4CI	0.164 - 0.056	66.28
PWG3.0-22-1CI	0.139 - 0.045	68.57	PWG3.0-22-2CI	0.140 - 0.046	67.99	PWG3.0-22-3CI	0.142 - 0.046	71.86	PWG3.0-22-4CI	0.164 - 0.056	73.57
PWG3.0-23-1CI	0.139 - 0.045	74.28	PWG3.0-23-2CI	0.140 - 0.046	73.65	PWG3.0-23-3CI	0.142 - 0.046	79.34	PWG3.0-23-4CI	0.164 - 0.056	79.70
PWG3.0-24-1CI	0.139 - 0.045	81.63	PWG3.0-24-2CI	0.140 - 0.046	81.01	PWG3.0-24-3CI	0.142 - 0.046	85.66	PWG3.0-24-4CI	0.164 - 0.056	86.04
PWG3.0-25-1CI	0.139 - 0.045	87.85	PWG3.0-25-2CI	0.140 - 0.046	87.19	PWG3.0-25-3CI	0.142 - 0.046	92.19	PWG3.0-25-4CI	0.164 - 0.056	94.49
PWG3.0-26-1CI	0.139 - 0.045	94.28	PWG3.0-26-2CI	0.140 - 0.046	93.57	PWG3.0-26-3CI	0.142 - 0.046	98.93	PWG3.0-26-4CI	0.164 - 0.056	101.41
PWG3.0-27-1CI	0.139 - 0.045	101.79	PWG3.0-27-2CI	0.140 - 0.046	100.15	PWG3.0-27-3CI	0.142 - 0.046	105.89	PWG3.0-27-4CI	0.164 - 0.056	108.53
PWG3.0-28-1CI	0.139 - 0.045	108.68	PWG3.0-28-2CI	0.140 - 0.046	106.92	PWG3.0-28-3CI	0.142 - 0.046	113.05	PWG3.0-28-4CI	0.164 - 0.056	115.88
PWG3.0-29-1CI	0.139 - 0.045	116.77	PWG3.0-29-2CI	0.140 - 0.046	113.89	PWG3.0-29-3CI	0.142 - 0.046	120.42	PWG3.0-29-4CI	0.164 - 0.056	125.90
PWG3.0-30-1CI	0.139 - 0.045	124.12	PWG3.0-30-2CI	0.140 - 0.046	121.06	PWG3.0-30-3CI	0.142 - 0.046	128.00	PWG3.0-30-4CI	0.164 - 0.056	133.82
PWG3.0-32-1CI	0.139 - 0.045	139.41	PWG3.0-32-2CI	0.140 - 0.046	135.97	PWG3.0-32-3CI	0.142 - 0.046	146.48	PWG3.0-32-4CI	0.164 - 0.056	150.31
PWG3.0-35-1CI	0.139 - 0.045	163.81	PWG3.0-35-2CI	0.140 - 0.046	159.77	PWG3.0-35-3CI	0.142 - 0.046	172.12	PWG3.0-35-4CI	0.164 - 0.056	180.08
PWG3.0-38-1CI	0.139 - 0.045	196.49	PWG3.0-38-2CI	0.140 - 0.046	188.70	PWG3.0-38-3CI	0.142 - 0.046	199.58	PWG3.0-38-4CI	0.164 - 0.056	208.81
PWG3.0-40-1CI	0.139 - 0.045	215.50	PWG3.0-40-2CI	0.140 - 0.046	206.95	PWG3.0-40-3CI	0.142 - 0.046	218.89	PWG3.0-40-4CI	0.164 - 0.056	229.01